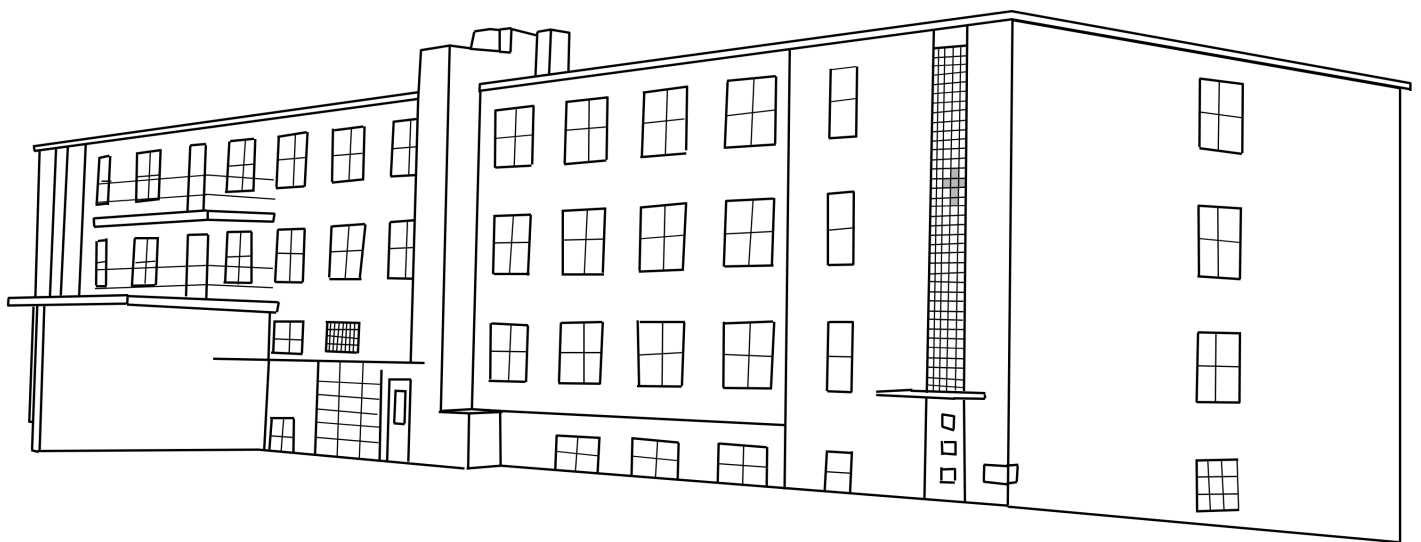

Bethesda Fun Fact

During the Annual Conference of the Lutheran Free Church on June 8-12, 1949, the idea of Bethesda Homes purchasing property in Willmar to build a new home. Congress gave the project its unanimous approval. The Conference met with an architect at a meeting of the Board of Directors on April 10th, 1951; they decided to erect a two-story building with the capacity of 38 beds on the site in Willmar. It was constructed so that two additional stories could be added to the structure in the future.

Building began in the summer of 1951, and on October 14th, the cornerstone was laid with appropriate ceremonies. The name of the new building was Bethesda Nursing Home. The Corporation met on June 3rd, 1952, and decided to build the two top stories of the projected structure, thus completing it. The Board of Directors determined the same day to authorize the issue of bonds of \$150,000 at 4% interest to finance the construction of the building.

The new building was ready for occupancy on June 1st, 1953.

Bethesda Heritage Center
Willmar, MN
1953-2016



Bethesda Fun Fact

Excerpt from West Central Minnesota Tribune dated December 15, 1953:

"The aim of this nursing home in Willmar, which is the first in the entire state to be specially designed and equipped for aged and bedridden patients, is to give spiritual as well as physical care for the residents. Each week, in addition to regularly conducted Sunday morning services, there are also mid-week religious services held for the patients."

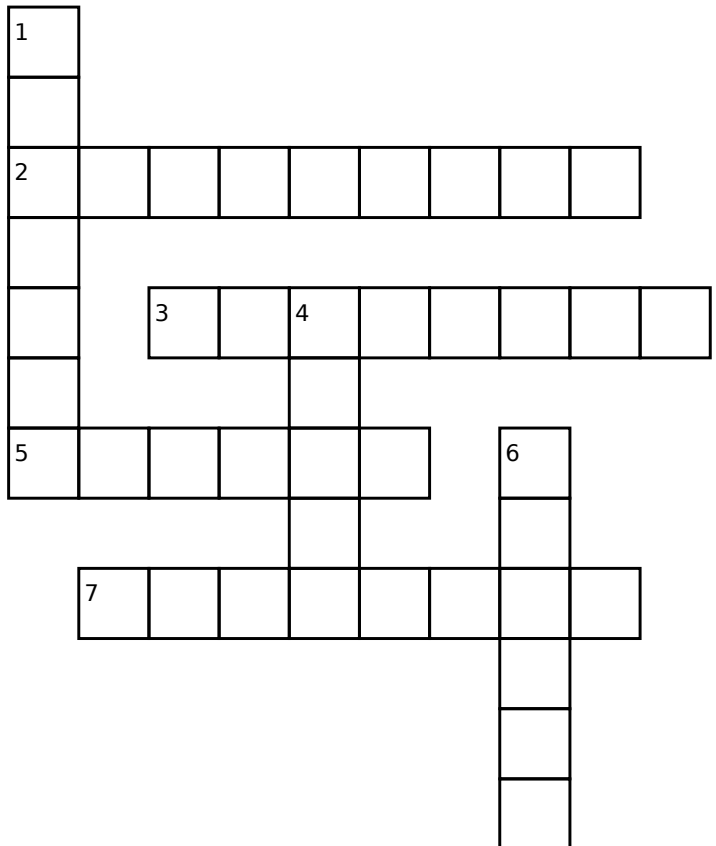
To this day, there are Sunday services as well as Pastors Corner Bible study. Due to restrictions during Covid about meeting in large groups, our spiritual team has slightly changed the manner of services which are now recorded and available for online streaming through the Bethesda Willmar Facebook and YouTube accounts.

Down:

1. Currently there are Sunday services as well as _____ Corner Bible study.
4. Bethesda Nursing Home was the first of its kind in the entire _____.
6. There are restrictions about meeting in large _____ due to Covid.

Across:

2. A focus at Bethesda Home was to provide _____ and physical care for the residents.
3. Bethesda Nursing Home was specifically _____ and equipped for aged and bedridden patients.
5. Each week there are _____ morning services as well as mid-week religious services.
7. Sunday services and Pastors Corner Bible study are available for streaming on the Bethesda Willmar _____ and YouTube accounts.





125 YEARS

"For the Lord is good and His love endures forever;
His faithfulness continues through all generations."
Psalm 100:5

Celebrating a faith-forward tradition of care.

Bethesda Fun Fact

Excerpt from the Bethesda Nursing Home 20th Anniversary program:

"The four-story brick building known as Bethesda Nursing Home (Heritage Center), was completed in June of 1953.

In 1961 an addition was completed increasing the the beds available from 86 to 168. A bond of \$250,000 was approved in June of 1970 for improvements to the Home. A dedication was held in 1971 for the expanded facilities with included; a new chapel lounge, enclosing the porch areas on the west side, doubling the space in the kitchen area and adding new equipment, a physical therapy and recreation room, an arts and crafts room, plus installation of an air conditioning and ventilation system."

C H A P E L K K D O W P S W N P F S F Q
V R N R X H U G F K C V Z J N F S X G F
U K X Y Q O V C R B I K V O D C Z J B R
J J K C J M J R E R M T Q L F L T V O C
L R T G D E K A C S T P C H R L B M N Q
R Q T Z E F J F R B S T A H K M P J D E
I H I Z R Z T T E D A B I J E V O M H T
F G G B Z D Q S A A U N R W T N R V E Z
J Z S E Z H K K T N U R S I N G C P R J
Y Z H T L O V C I W O W G O J R H B I J
Y M J H O U O W O G K K J Z W Z S T T A
H K R E D P N M N V K N X T F V Q B A U
A C E S J E X D E D I C A T I O N I G L
K Y E D X C L N X G O F T M D L M R E O
E E S A S G U L H H X S B U I L D I N G

RECREATION

DEDICATION

BETHESDA

BUILDING

NURSING

HERITAGE

KITCHEN

CHAPEL

CRAFTS

PORCH

HOME

BOND

The KMS Marching Band performed and community members with vintage cars and tractors all came out to show their support as they made their trek.

Eighty-five residents of the Heritage Center made the move to their new home. Many of them, bundled up against a cool breeze, joined the parade, pushed along in wheelchairs by staff and relatives. A cheering crowd of Pleasant View residents and staff welcomed them at their destination.

