

Bethesda

North Pointe

For reservation information,
contact our Welcome Center:
Call 320-214-5643 or email
welcome@bethesdawillmar.com

Welcome to Bethesda North Pointe,

Our new campus in New London, Bethesda North Pointe, brings the future of senior living, assisted living, intergenerational activities, health and wellness, and the community together in one place that truly embodies what it means to live well.

Our aging-as-desired housing model empowers residents to make their own personal lifestyle choices, while providing access to tailored health-related services within the campus continuum. The goal is to keep residents within their local communities and couples living together longer.

FAMILY CENTERED, COMMUNITY OF CARE

Bethesda North Pointe provides a family centered, community of care in northern Kandiyohi County — a new home where families can embrace new journeys together, while remaining connected to the lifestyles and foundations they've built over time.



The Waters Neighborhood
Independent & Assisted Living



The Oak Woods Neighborhood
Enhanced Care Assisted Living



The Gardenia Neighborhood
Memory Care Assisted Living



BETHESDA NORTH POINTE

Lifestyle + Wellness

VIBRANT LIFESTYLES

The Bethesda North Pointe campus is designed to welcome the community to fully engage with those who live, work or play within its walls. The campus will include an extension of our Willmar Club Bethesda health club, a chapel, café, activities area, intergenerational play spaces, library, creative arts workshops, salon, and a work activity center. These spaces will provide areas in which residents can entertain and celebrate milestones with family members and friends. Life at Bethesda North Pointe will be the best of both worlds — a home to live well and a community shared with others.



HEALTH & WELLNESS

Bethesda has always emphasized health and wellness. By extending our model of wellness to a new community we will empower more older adults to embrace healthy lifestyle choices that will enable healthier aging. Residents, family members, volunteers, staff, and the community will have an opportunity to enjoy our on-site, local health club designed uniquely for them. Initial campus designs include a 5,000-square-foot, state-of-the-art fitness gym, group fitness studio spaces, and a full-range of fitness and lifestyle classes.

In response to local advocacy, Bethesda has developed Phase Two designs to integrate a 25-yard, warm-water therapy swimming pool, as well as the addition of an indoor sport court for pickleball and other recreational events. These spaces will be readily available to residents, families, and the community at-large. The commencement of Phase Two for the lifestyle development is solely dependent upon philanthropic support.

REHABILITATION SERVICES

We understand the unique physiological needs of older adults, and through personalized rehabilitation services, we can ensure clients' goals are met. With our Outpatient Therapy Program at Bethesda's Willmar campus, we have witnessed the first-hand benefits of allowing seniors to stay in their own home, while being able to access on-site rehabilitation services. We are excited to extend that vision to the New London-Spicer community.

The Bethesda Outpatient Therapy program provides innovative strategies and experienced therapists, knowledgeable about the latest therapy techniques. Our comprehensive outpatient therapy services are flexible and individualized to promote independence, choice and dignity. Individuals who have experienced a stroke, a joint replacement, respiratory problems, balance impairments, or have a movement disorder such as Parkinson's, will benefit from physical therapy at the Bethesda North Pointe Therapy Center.



SENIOR LIVING

Independent & Assisted Living

THE WATERS NEIGHBORHOOD

The Waters Neighborhood: Independent Living & Assisted Living

34 apartments available

Bethesda North Pointe is introducing a new level of care for the New London-Spicer community, offering older adults housing options that combine the modern amenities they desire with the convenient integration of skilled health assistance as needed — forgoing the need to move as health needs change.

Each household will be designed with all the comforts of home, yet capable of embracing the need for health service assistance. We have thoughtfully designed a campus that embodies the modern amenity desires of our aging community, while respecting our residents' stewardship values.

Monthly rent for Bethesda North Pointe independent and assisted living households includes the following amenities:

- Complimentary basic cable package and access to guest Wi-Fi network
- Staffed recreational and social programs
- Coin-free laundry; in-unit or on-site
- Private spaces for party reservations
- On-site building maintenance
- Secured entry system
- Three on-site dining locations
- All utilities: heat, water, electricity, trash and recycling
- Emergency pendant response, by on-site trained staff, for assisted living
- Daily "I'm OK" system for independent living
- Select business office services
- Membership to Club Bethesda Wellness Center on campus



Available personal care packages will allow members residing in the independent and assisted living apartment access to additional amenities including health services. Fees are discussed following a comprehensive nursing assessment with the registered nurse, and selected as desired or required.

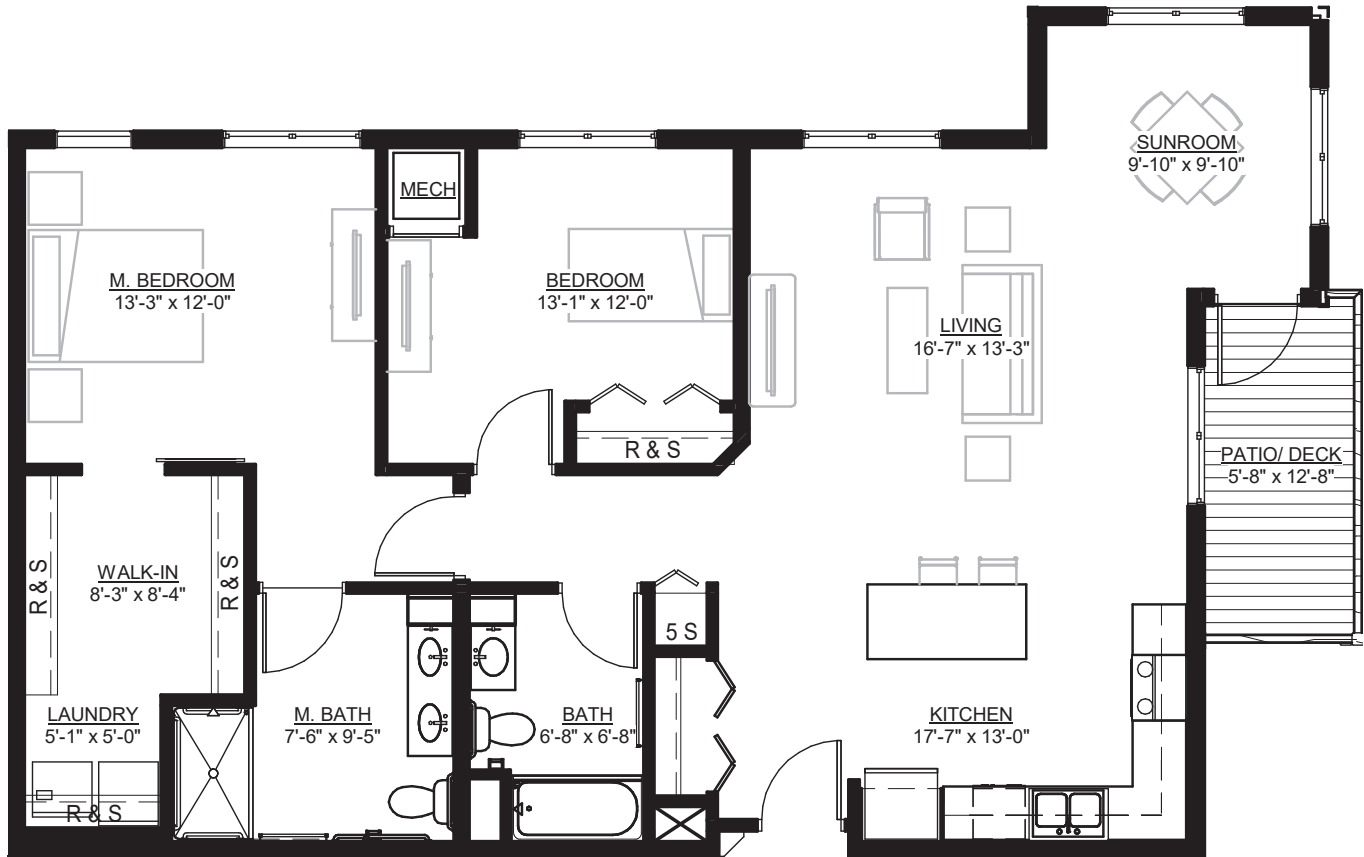
It is illegal to discriminate against any person because of race, color, religion, sex, handicap, familial status or national origin.



SENIOR LIVING

Independent & Assisted Living - TWO BEDROOM

Bethesda
North Pointe



The Green

TWO BEDROOMS / TWO BATHROOMS

- 1,305 square feet
- Two units available
- First & second floor
- Assisted-living services available for an additional fee

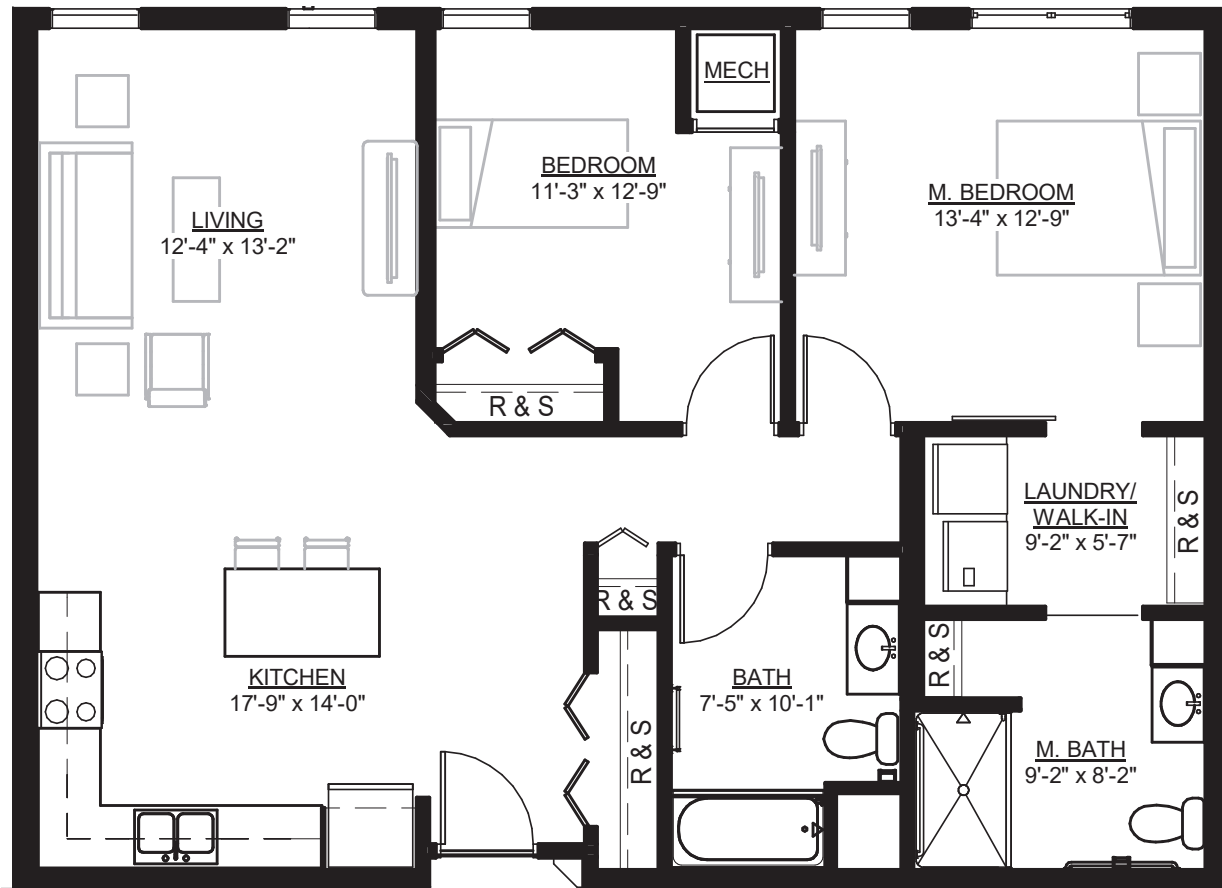
*Custom Finish
Options Available!*

Actual dimensions of apartments may vary.

SENIOR LIVING

Independent & Assisted Living - TWO BEDROOM

Bethesda
North Pointe



The King

TWO BEDROOMS / TWO BATHROOMS

- 1,077 square feet
- One unit available
- Second floor
- Assisted-living services available for an additional fee

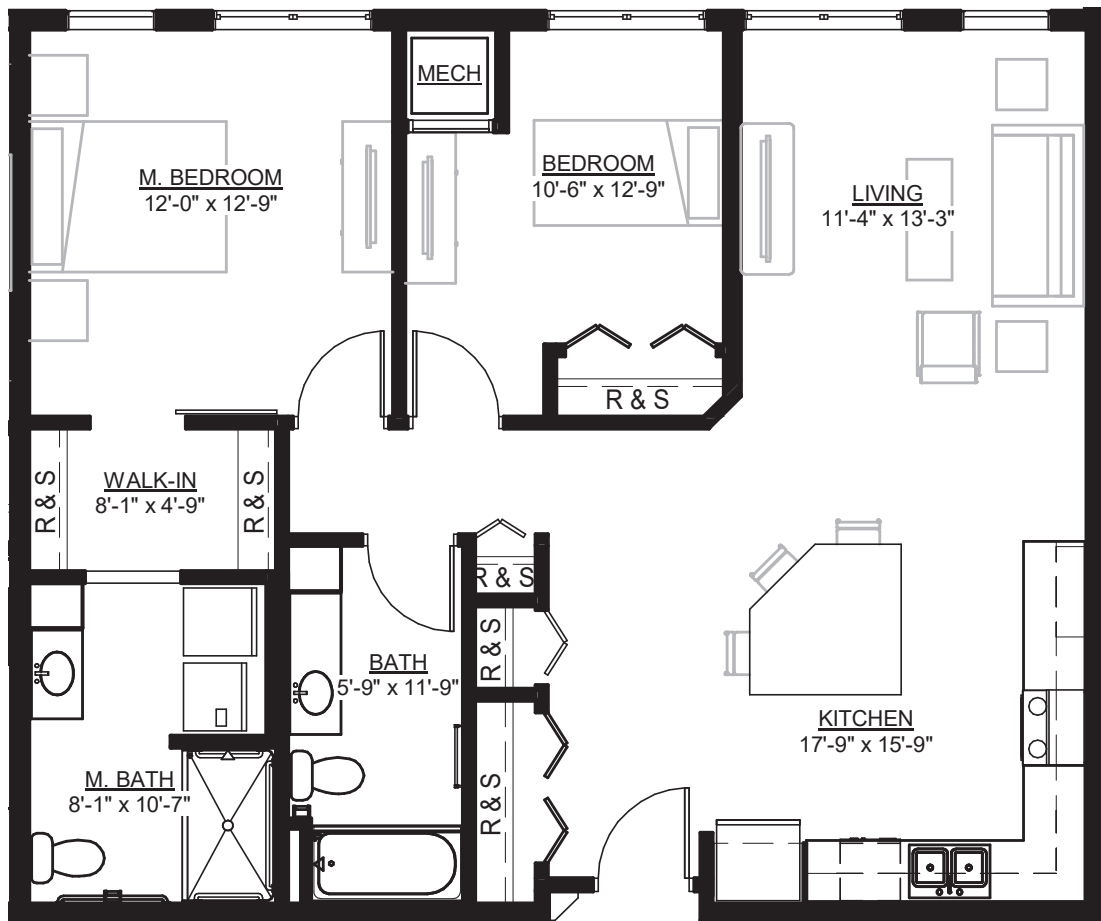
*Custom Finish
Options Available!*

Actual dimensions of apartments may vary.

SENIOR LIVING

Independent & Assisted Living - TWO BEDROOM

Bethesda
North Pointe



The Henderson

TWO BEDROOMS / TWO BATHROOMS

- 1,052 square feet
- One unit available
- Second floor
- Assisted-living services available for an additional fee

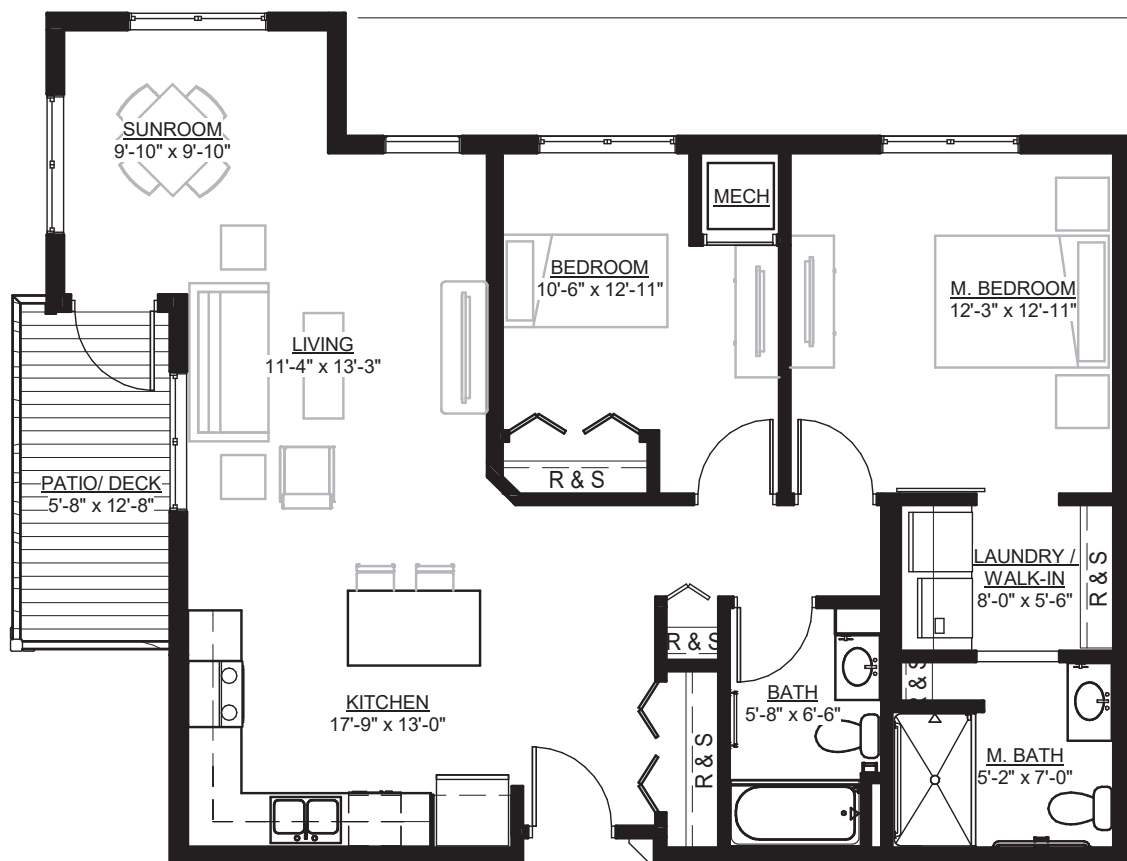
*Custom Finish
Options Available!*

Actual dimensions of apartments may vary.

SENIOR LIVING

Independent & Assisted Living - TWO BEDROOM

Bethesda
North Pointe



The Diamond

TWO BEDROOMS / TWO BATHROOMS

- 1,052 square feet
- Four units available
- First and second floor
- Assisted-living services available for an additional fee

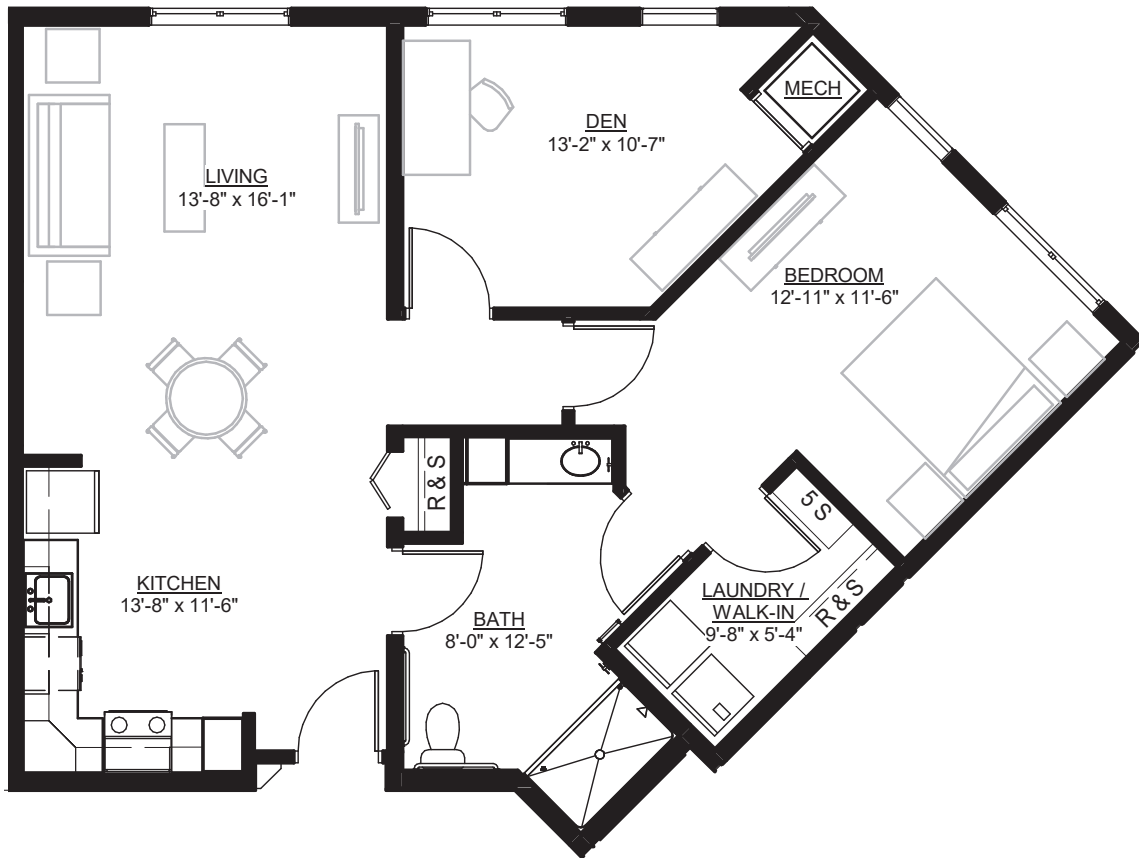
*Custom Finish
Options Available!*

Actual dimensions of apartments may vary.

SENIOR LIVING

Independent & Assisted Living - ONE BEDROOM + DEN

Bethesda
North Pointe



The Ella

ONE BEDROOM + DEN

- 994 square feet
- One unit available
- Second floor
- Assisted-living services available for an additional fee

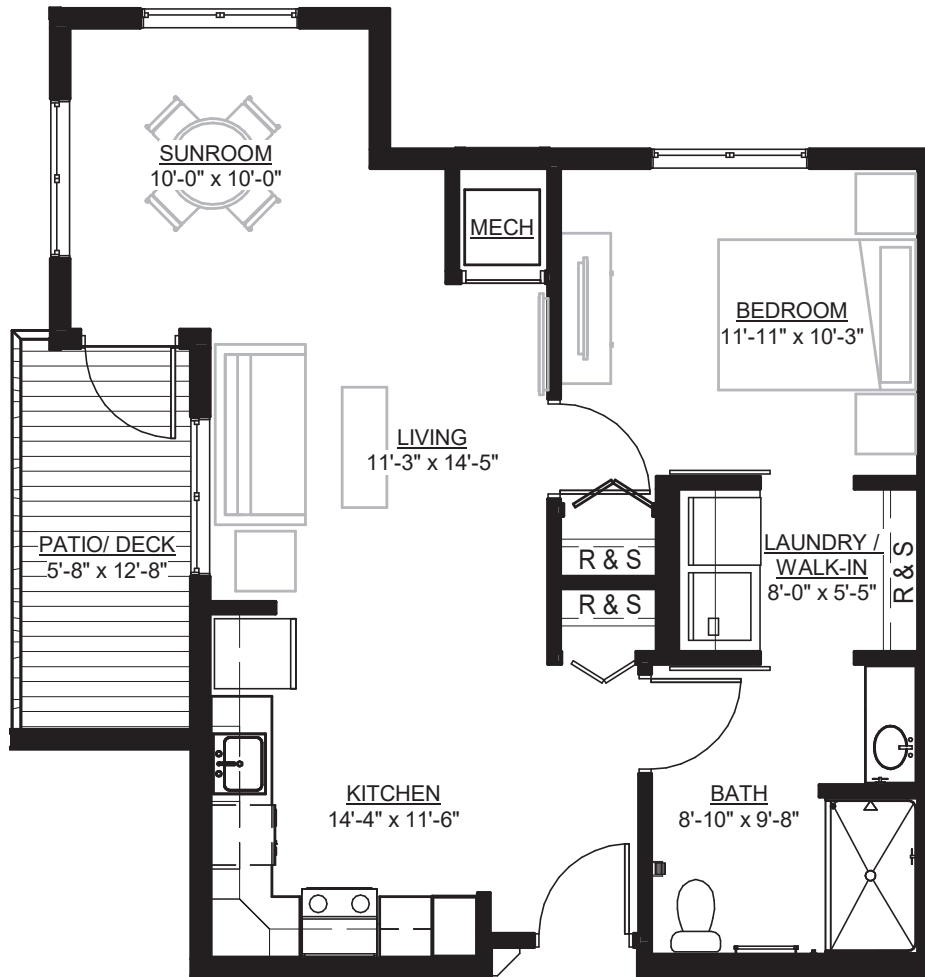
*Custom Finish
Options Available!*

Actual dimensions of apartments may vary.

SENIOR LIVING

Independent & Assisted Living - ONE BEDROOM + SUNROOM

Bethesda
North Pointe



The Eagle

ONE BEDROOM + SUNROOM

- 746 square feet
- Two units available
- First and second floor
- Assisted-living services available for an additional fee

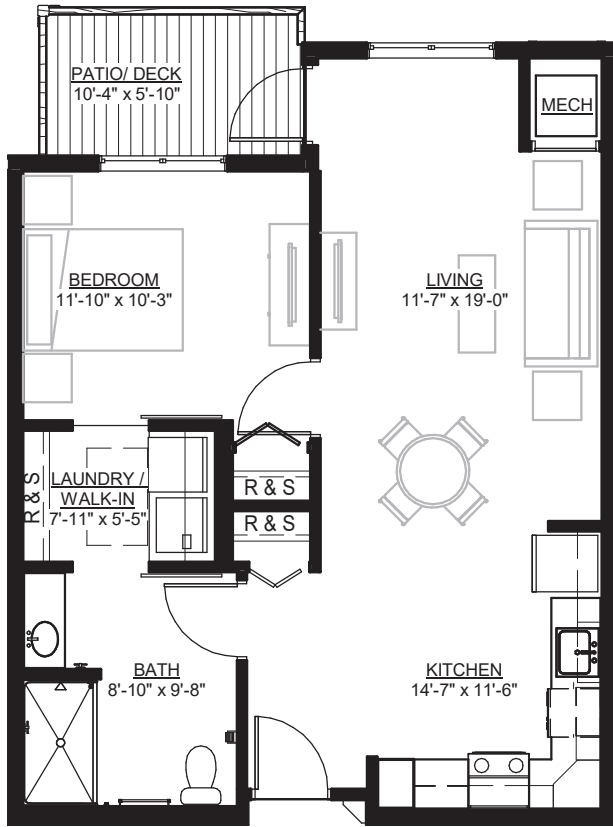
*Custom Finish
Options Available!*

Actual dimensions of apartments may vary.

SENIOR LIVING

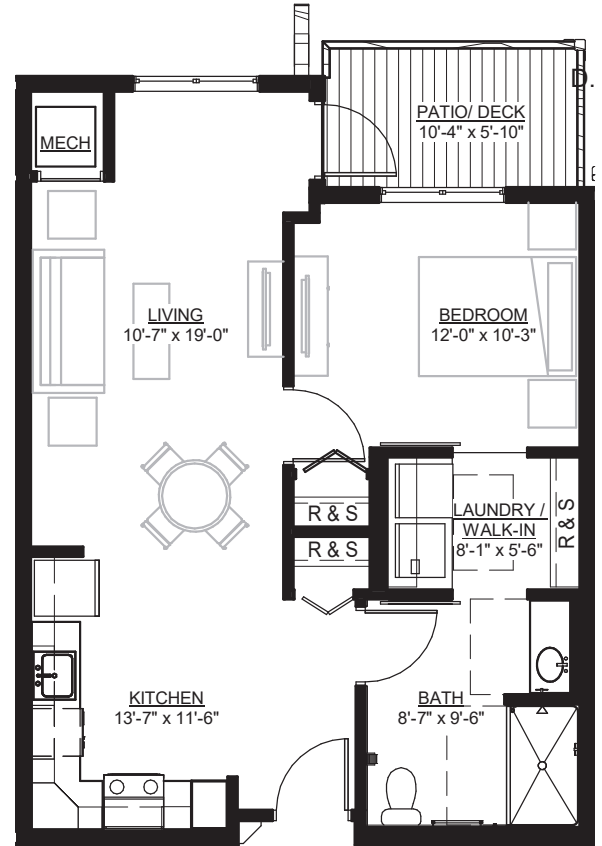
Independent & Assisted Living - ONE BEDROOM

Bethesda
North Pointe



The Florida ONE BEDROOM

- 720 square feet
- Four units available
- First and second floor
- Assisted-living services available for an additional fee



The Norway ONE BEDROOM

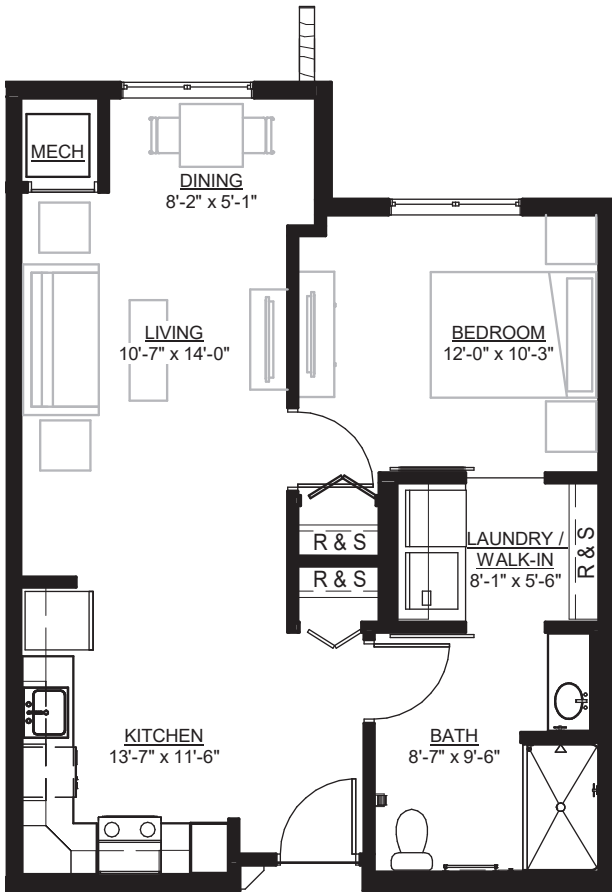
- 695 square feet
- 9 units available
- First and second floor
- Assisted-living services available for an additional fee

*Custom Finish
Options Available!*

SENIOR LIVING

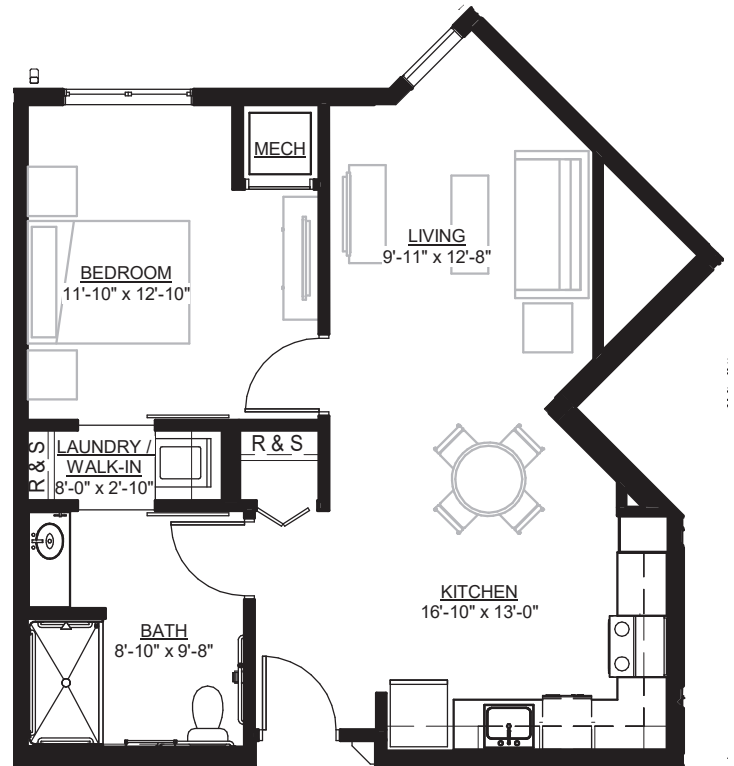
Independent & Assisted Living - ONE BEDROOM

Bethesda
North Pointe



The Sperry
ONE BEDROOM

- 695 square feet
- Four units available
- First and second floor
- Assisted-living services available for an additional fee



The Ringo
ONE BEDROOM

- 662 square feet
- One unit available
- Second floor
- Assisted-living services available for an additional fee



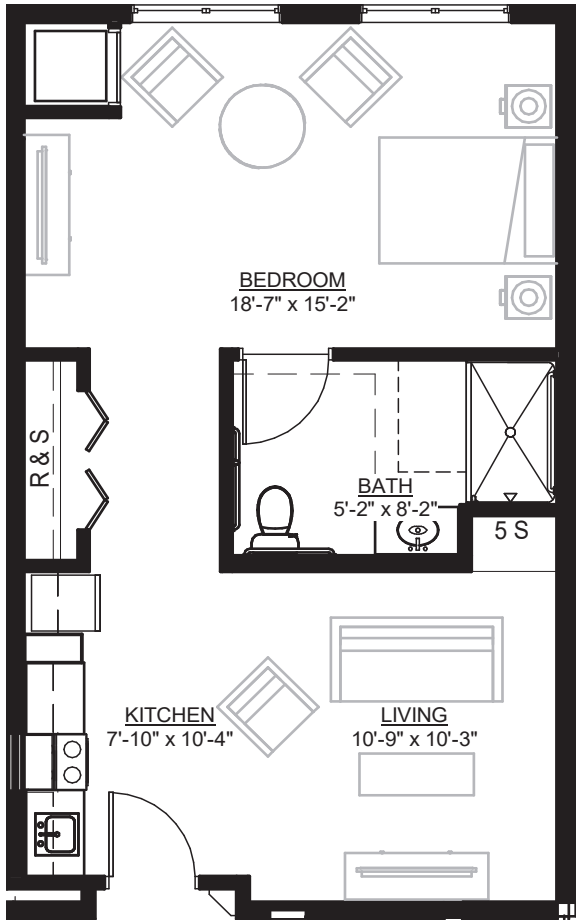
*Custom Finish
Options Available!*

Actual dimensions of apartments may vary.

SENIOR LIVING

Independent & Assisted Living - STUDIO

Bethesda
North Pointe

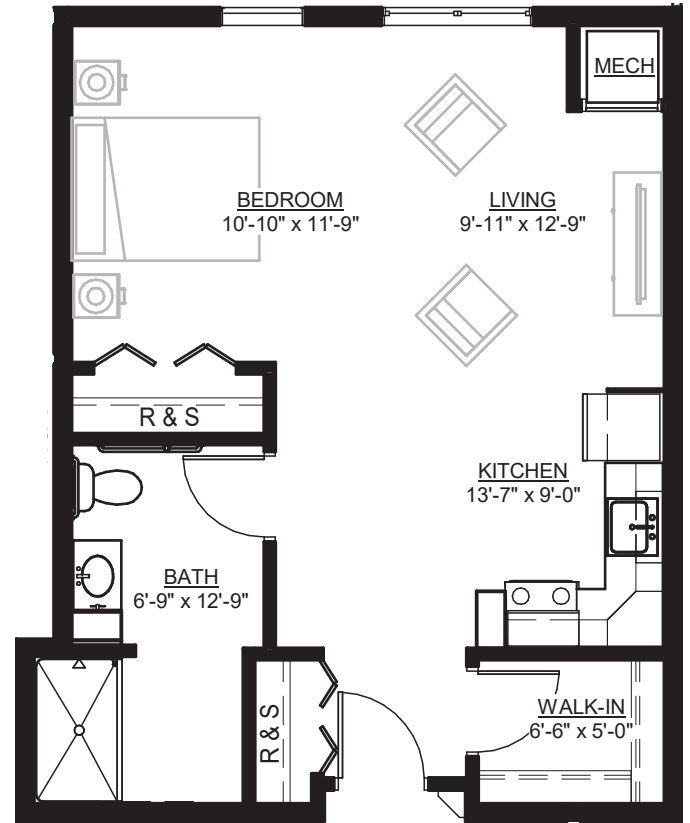


The Elkhorn
STUDIO

- 613 square feet
- One unit available
- Second floor
- Assisted-living services available for an additional fee



Actual dimensions of apartments may vary.



The Andrew
STUDIO

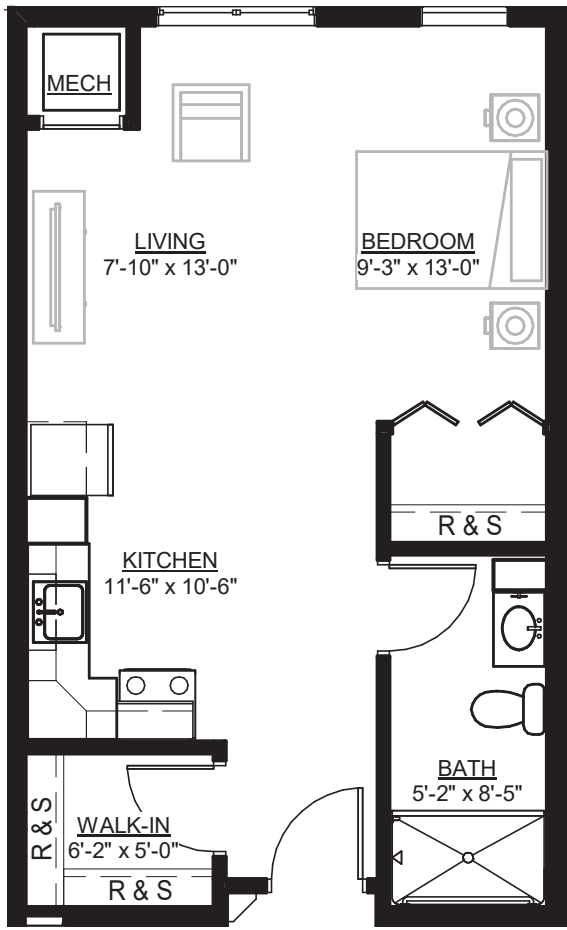
- 603 square feet
- One unit available
- Second floor
- Assisted-living services available for an additional fee

*Custom Finish
Options Available!*

SENIOR LIVING

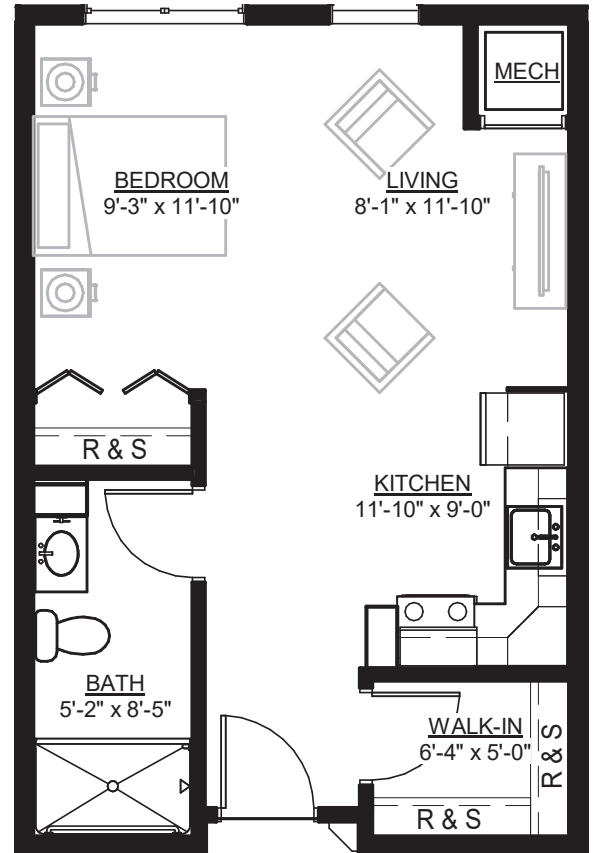
Independent & Assisted Living - STUDIO

Bethesda
North Pointe



The Swan
STUDIO

- 523 square feet
- One unit available
- Second floor
- Assisted-living services available for an additional fee



The Nest
STUDIO

- 485 square feet
- Two units available
- First and second floor
- Assisted-living services available for an additional fee

*Custom Finish
Options Available!*

BETHESDA NORTH POINTE

A legacy in the making.

OUR LEGACY

Bethesda has a rich history of caring for others and serving the community of West Central Minnesota. Bethesda was founded in 1897 as an orphanage in Lamberton, Minnesota. In 1905, it relocated to a site six miles north of Willmar, at what was called the Country Home. Bethesda began providing services to older adults, as well as children, in 1910. The need for aging services grew, and by 1939, Bethesda began serving exclusively older adults.

Bethesda has since grown to achieve unparalleled success and become a national model for elder care and senior living services. We have accomplished this by defining the quality of life as not only medical, but also emotional, spiritual and social well-being, for those we are privileged to serve. Bethesda has always been at the leading edge, setting the bar and re-imagining the future.

Bethesda helps ensure seniors have the care they need in the location that is best for them. As the needs of seniors and our community have changed over the years, we have responded by introducing community programs with Bethesda as the umbrella of our services. Now, we embark on our next and perhaps greatest challenge ever: To transform the way residential long-term care and community services are delivered and to alter the concept of "nursing home" forever in the New London and Spicer area.

OUR MISSION

Our mission statement is representative of what we do every day: Serving others together in faith, community and life. These gentle, inspiring words help guide us as we make decisions that best serve our Bethesda family.

