

# Bethesda

## *North Pointe*

For reservation information,  
contact our Welcome Center:  
Call 320-214-5643 or email  
[welcome@bethesdawillmar.com](mailto:welcome@bethesdawillmar.com)

## *Welcome to Bethesda North Pointe,*

Our new campus in New London, Bethesda North Pointe, brings the future of senior living, assisted living, intergenerational activities, health and wellness, and the community together in one place that truly embodies what it means to live well.

Our aging-as-desired housing model empowers residents to make their own personal lifestyle choices, while providing access to tailored health-related services within the campus continuum. The goal is to keep residents within their local communities and couples living together longer.

### **FAMILY CENTERED, COMMUNITY OF CARE**

Bethesda North Pointe provides a family centered, community of care in northern Kandiyohi County — a new home where families can embrace new journeys together, while remaining connected to the lifestyles and foundations they've built over time.



*The Waters*  
Independent & Assisted Living



*The Oak Woods Neighborhood*  
Enhanced Care Assisted Living



*The Gardenia Neighborhood*  
Memory Care Assisted Living



# BETHESDA NORTH POINTE

Lifestyle + Wellness

## VIBRANT LIFESTYLES

The Bethesda North Pointe campus is designed to welcome the community to fully engage with those who live, work or play within its walls. The campus will include an extension of our Willmar Club Bethesda health club, a chapel, café, activities area, intergenerational play spaces, library, creative arts workshops, salon, and a work activity center. These spaces will provide areas in which residents can entertain and celebrate milestones with family members and friends. Life at Bethesda North Pointe will be the best of both worlds — a home to live well and a community shared with others.



## HEALTH & WELLNESS

Bethesda has always emphasized health and wellness. By extending our model of wellness to a new community we will empower more older adults to embrace healthy lifestyle choices that will enable healthier aging. Residents, family members, volunteers, staff, and the community will have an opportunity to enjoy our on-site, local health club designed uniquely for them. Initial campus designs include a 5,000-square-foot, state-of-the-art fitness gym, group fitness studio spaces, and a full-range of fitness and lifestyle classes.

In response to local advocacy, Bethesda has developed Phase Two designs to integrate a 25-yard, warm-water therapy swimming pool, as well as the addition of an indoor sport court for pickleball and other recreational events. These spaces will be readily available to residents, families, and the community at-large. The commencement of Phase Two for the lifestyle development is solely dependent upon philanthropic support.

## REHABILITATION SERVICES

We understand the unique physiological needs of older adults, and through personalized rehabilitation services, we can ensure clients' goals are met. With our Outpatient Therapy Program at Bethesda's Willmar campus, we have witnessed the first-hand benefits of allowing seniors to stay in their own home, while being able to access on-site rehabilitation services. We are excited to extend that vision to the New London-Spicer community.

The Bethesda Outpatient Therapy program provides innovative strategies and experienced therapists, knowledgeable about the latest therapy techniques. Our comprehensive outpatient therapy services are flexible and individualized to promote independence, choice and dignity. Individuals who have experienced a stroke, a joint replacement, respiratory problems, balance impairments, or have a movement disorder such as Parkinson's, will benefit from physical therapy at the Bethesda North Pointe Therapy Center.



# SENIOR LIVING

Independent & Assisted Living

THE WATERS

## The Waters: Independent Living & Assisted Living

*36 apartments available*

Bethesda North Pointe is introducing a new level of care for the New London-Spicer community, offering older adults housing options that combine the modern amenities they desire with the convenient integration of skilled health assistance as needed — forgoing the need to move as health needs change.

Each household will be designed with all the comforts of home, yet capable of embracing the need for health service assistance. We have thoughtfully designed a campus that embodies the modern amenity desires of our aging community, while respecting our residents' stewardship values.

Monthly rent for Bethesda North Pointe independent and assisted living households includes the following amenities:

- Complimentary basic cable package and access to guest wi-fi network
- Staffed recreational and social programs
- Coin-free laundry; in-unit or on-site
- Private spaces for party reservations
- On-site building maintenance
- Secured entry system
- Three on-site dining locations
- All utilities: heat, water, electricity, trash and recycling
- Emergency pendant response, by on-site trained staff, for assisted living
- Daily "I'm OK" system for independent living
- Select business office services
- Membership to Club Bethesda Wellness Center on campus

Available personal care packages will allow members residing in the independent and assisted living apartment access to additional amenities including health services. Fees are discussed following a comprehensive nursing assessment with the registered nurse, and selected as desired or required.



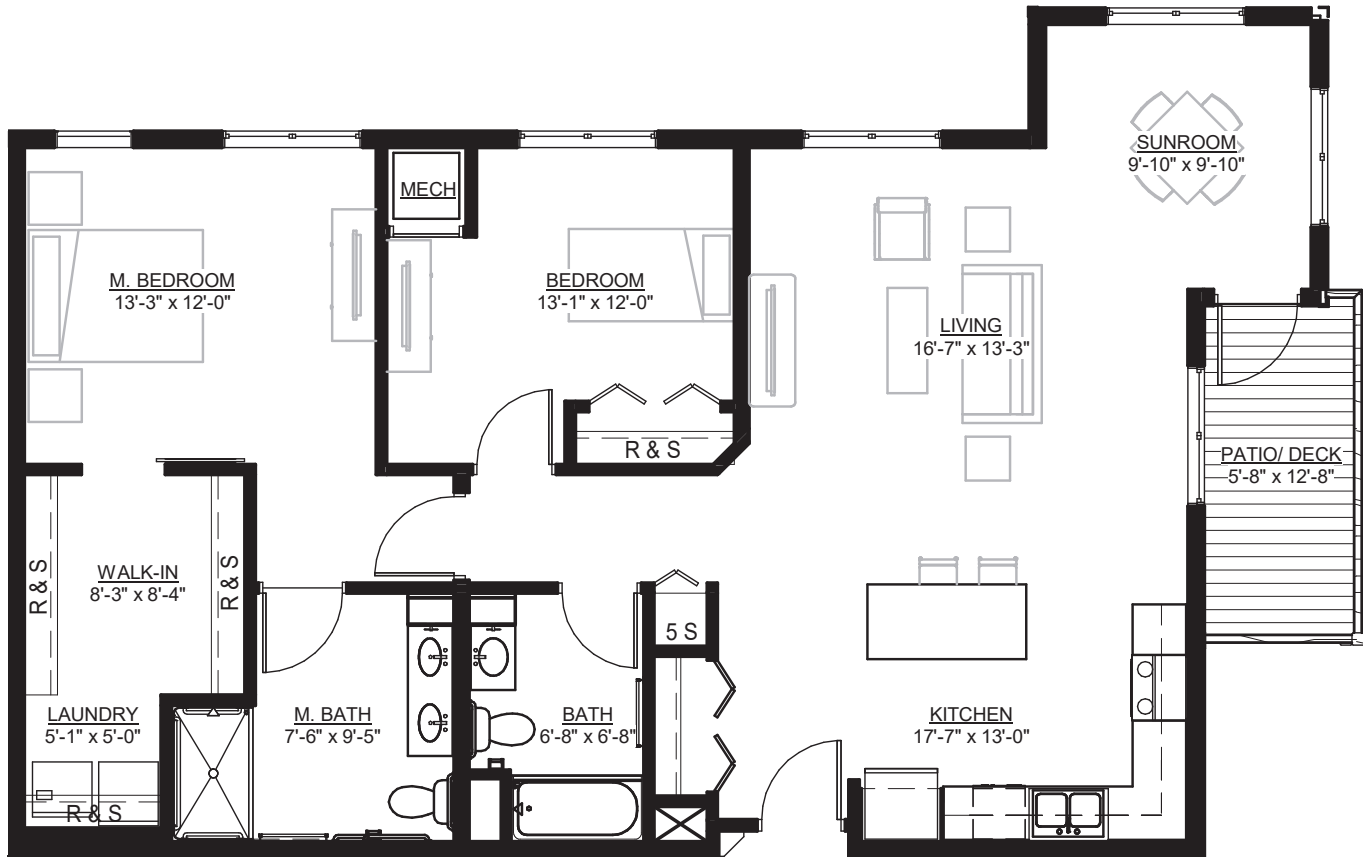
*It is illegal to discriminate against any person because of race, color, religion, sex, handicap, familial status or national origin.*



# SENIOR LIVING

Independent & Assisted Living - TWO BEDROOM

**Bethesda**  
North Pointe



## *The Green*

### TWO BEDROOMS / TWO BATHROOMS

- 1,305 square feet
- Two units available
- First & second floor
- Assisted-living services available for an additional fee

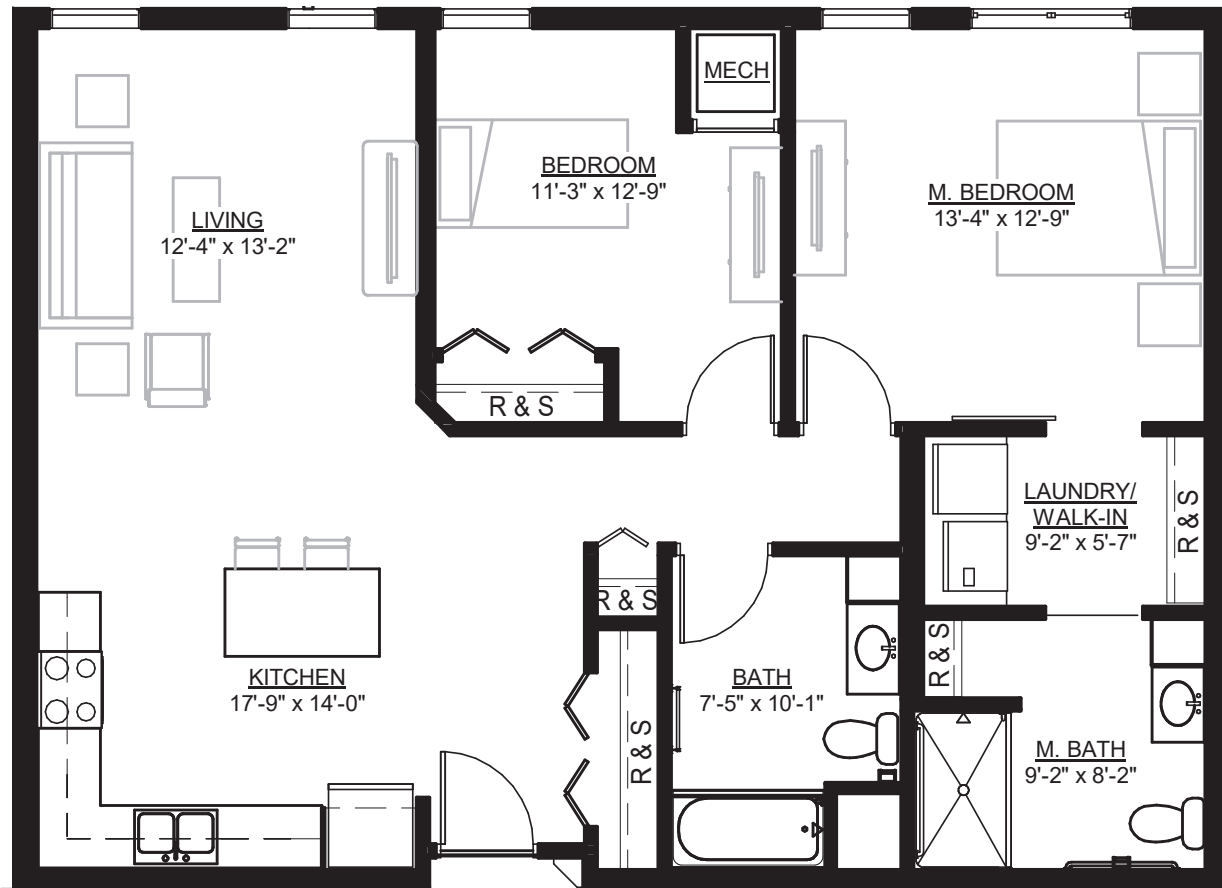
*Custom Finish  
Options Available!*

Actual dimensions of apartments may vary.

# SENIOR LIVING

Independent & Assisted Living - TWO BEDROOM

**Bethesda**  
North Pointe



*The King*

## TWO BEDROOMS / TWO BATHROOMS

- 1,077 square feet
- One unit available
- Second floor
- Assisted-living services available for an additional fee

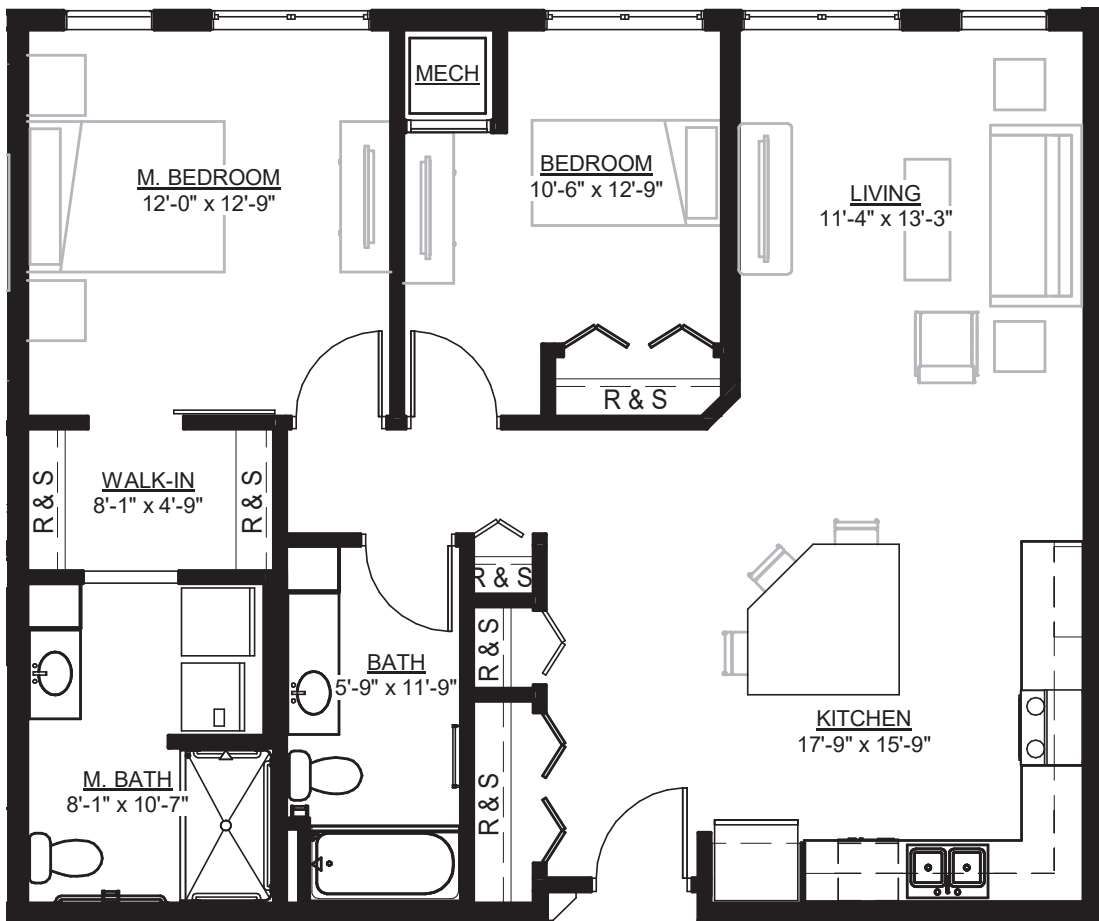
*Custom Finish  
Options Available!*

Actual dimensions of apartments may vary.

# SENIOR LIVING

Independent & Assisted Living - TWO BEDROOM

**Bethesda**  
North Pointe



## *The Henderson*

### TWO BEDROOMS / TWO BATHROOMS

- 1,052 square feet
- One unit available
- Second floor
- Assisted-living services available for an additional fee

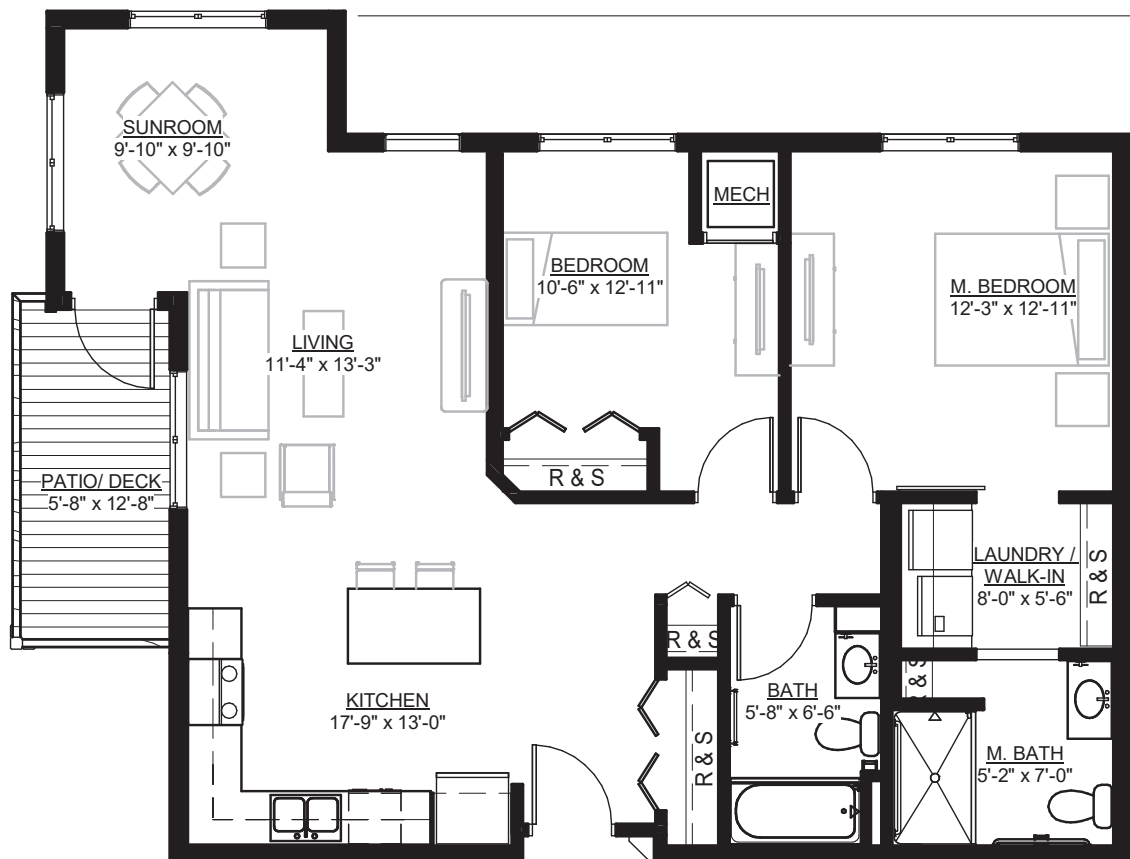
*Custom Finish  
Options Available!*

Actual dimensions of apartments may vary.

# SENIOR LIVING

Independent & Assisted Living - TWO BEDROOM

**Bethesda**  
North Pointe



## *The Diamond*

### TWO BEDROOMS / TWO BATHROOMS

- 1,052 square feet
- Four units available
- First and second floor
- Assisted-living services available for an additional fee

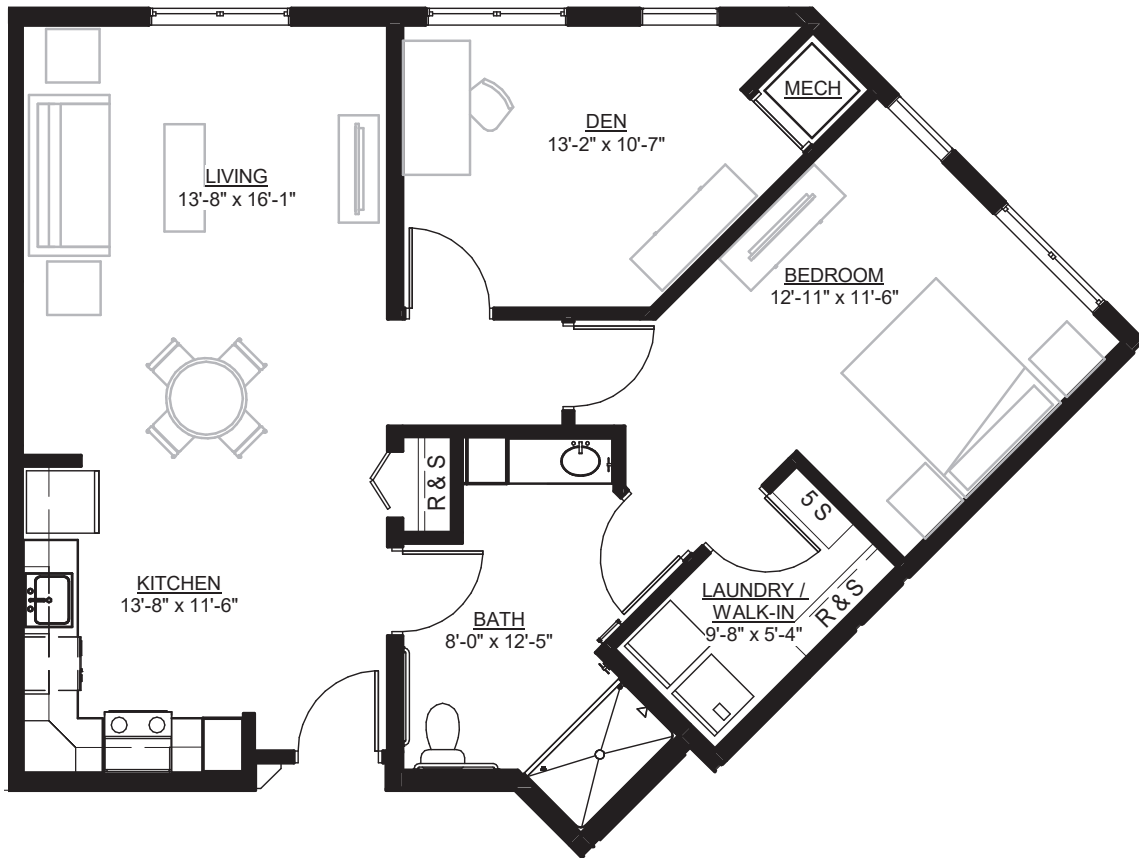
*Custom Finish  
Options Available!*

Actual dimensions of apartments may vary.

# SENIOR LIVING

Independent & Assisted Living - ONE BEDROOM + DEN

**Bethesda**  
North Pointe



*The Ella*

## ONE BEDROOM + DEN

- 994 square feet
- One unit available
- Second floor
- Assisted-living services available for an additional fee

*Custom Finish  
Options Available!*

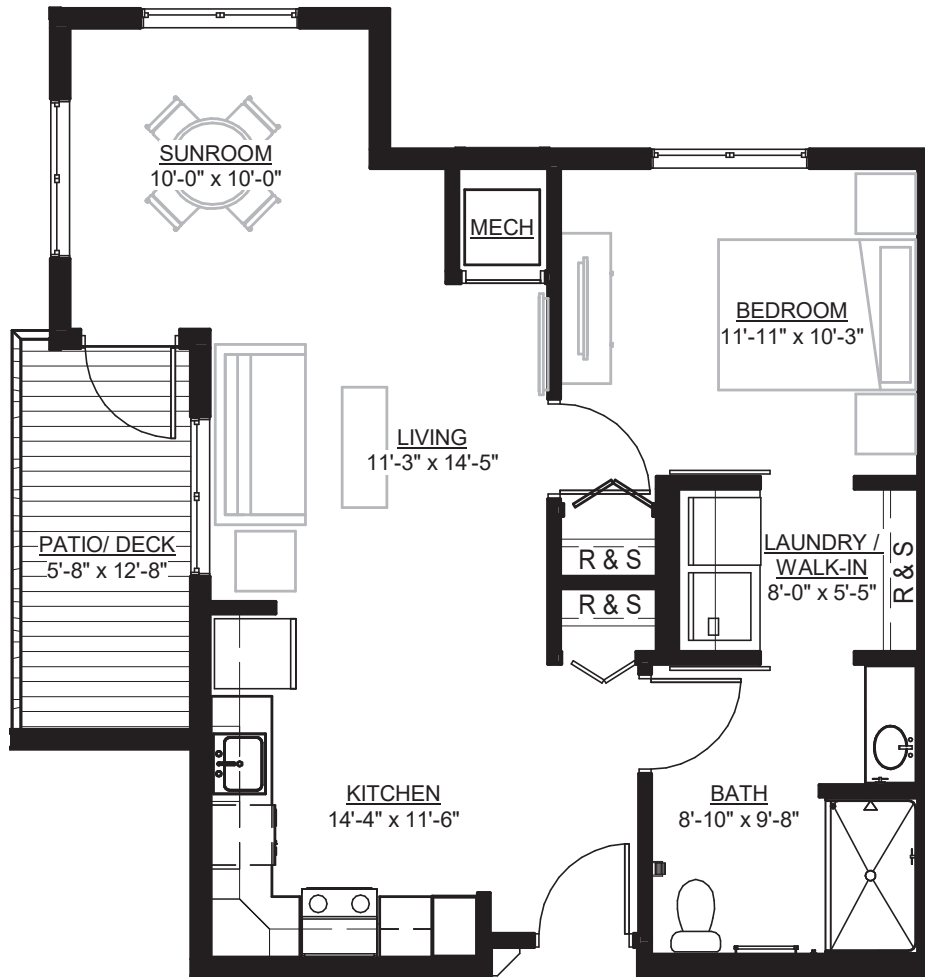
Actual dimensions of apartments may vary.



# SENIOR LIVING

Independent & Assisted Living - ONE BEDROOM + SUNROOM

**Bethesda**  
North Pointe



*The Eagle*

## ONE BEDROOM + SUNROOM

- 746 square feet
- Two units available
- First and second floor
- Assisted-living services available for an additional fee

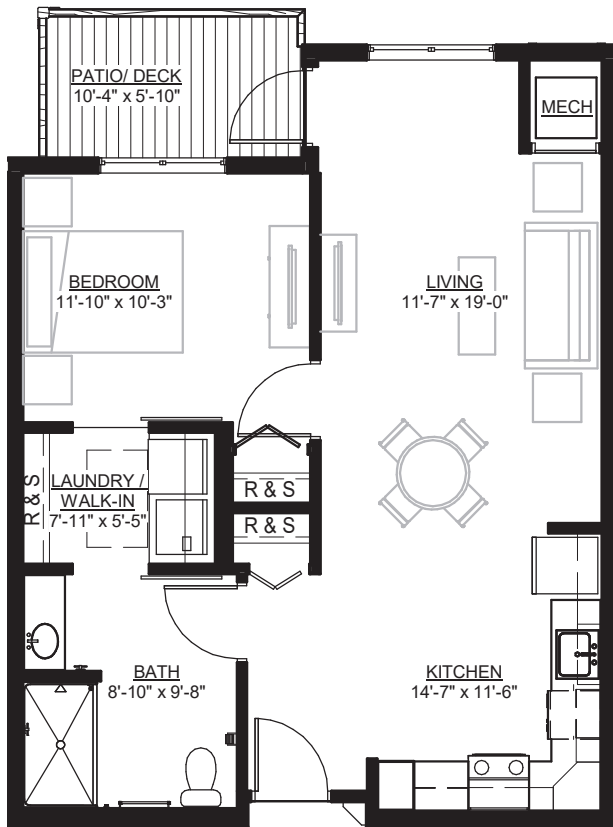
*Custom Finish  
Options Available!*

Actual dimensions of apartments may vary.

# SENIOR LIVING

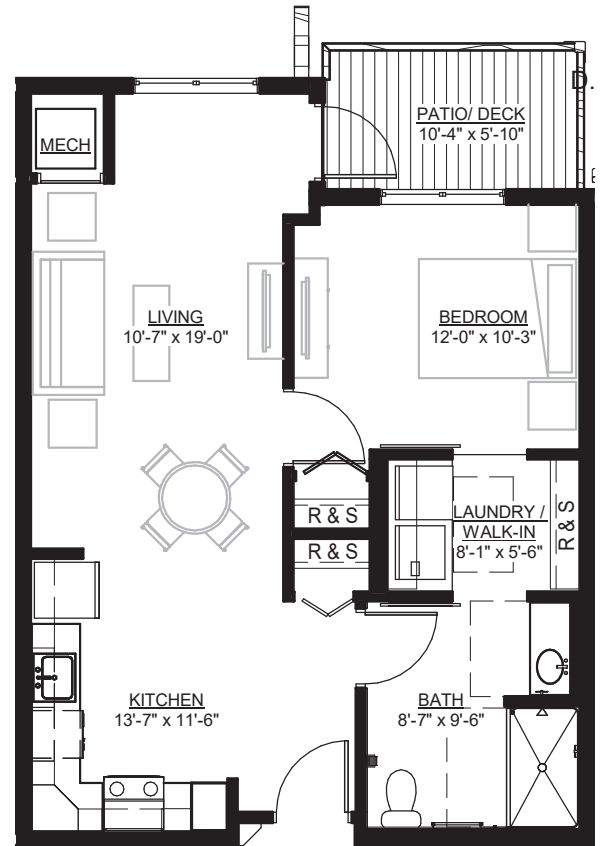
Independent & Assisted Living - ONE BEDROOM

**Bethesda**  
North Pointe



## *The Florida* ONE BEDROOM

- 720 square feet
- Four units available
- First and second floor
- Assisted-living services available for an additional fee



## *The Norway* ONE BEDROOM

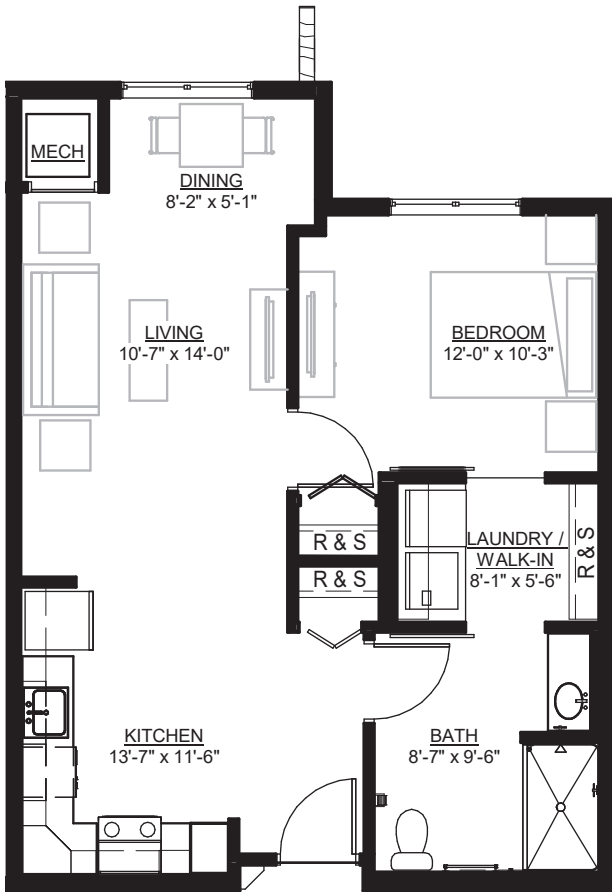
- 695 square feet
- 10 units available
- First and second floor
- Assisted-living services available for an additional fee

*Custom Finish  
Options Available!*

# SENIOR LIVING

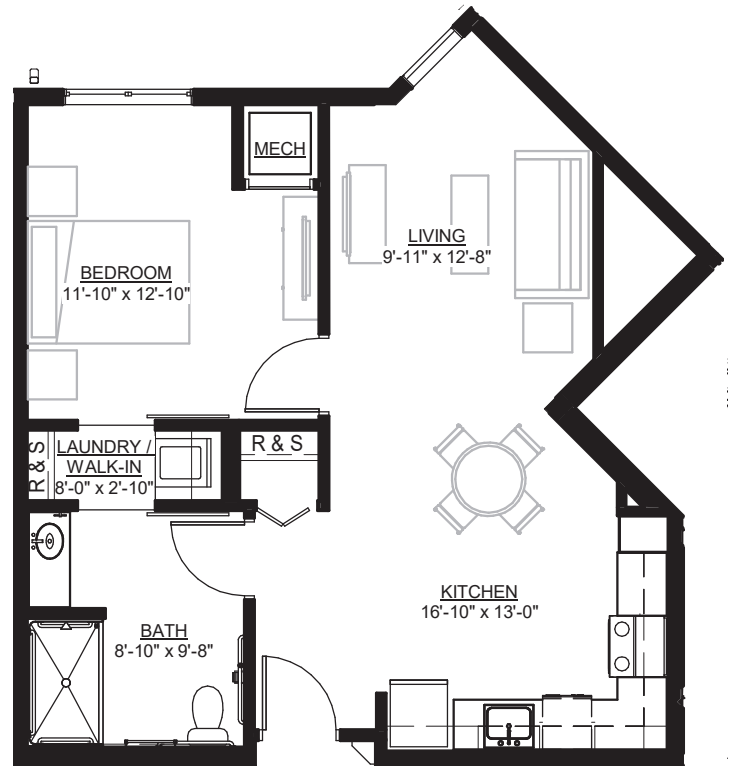
Independent & Assisted Living - ONE BEDROOM

**Bethesda**  
North Pointe



*The Sperry*  
**ONE BEDROOM**

- 695 square feet
- Four units available
- First and second floor
- Assisted-living services available for an additional fee



*The Ringo*  
**ONE BEDROOM**

- 662 square feet
- One unit available
- Second floor
- Assisted-living services available for an additional fee



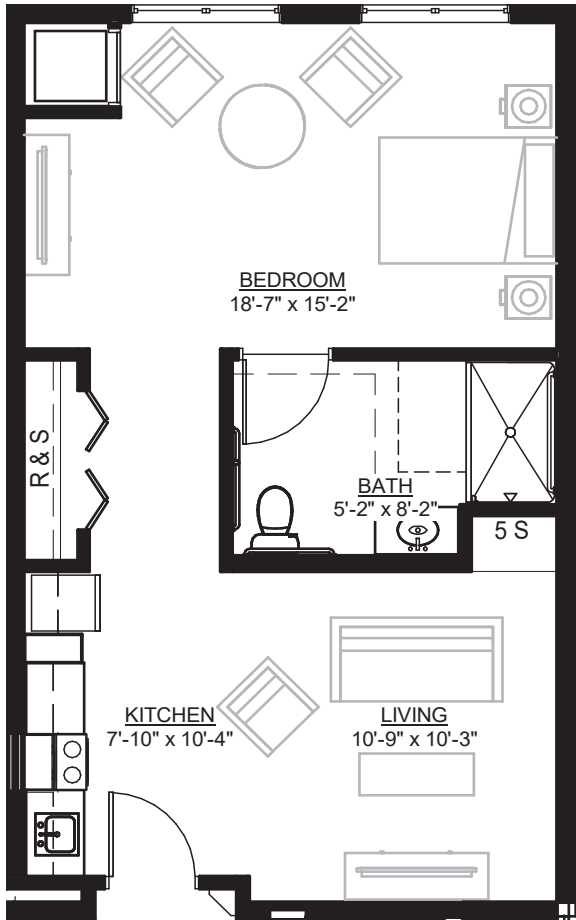
*Custom Finish  
Options Available!*

Actual dimensions of apartments may vary.

# SENIOR LIVING

Independent & Assisted Living - STUDIO

**Bethesda**  
North Pointe

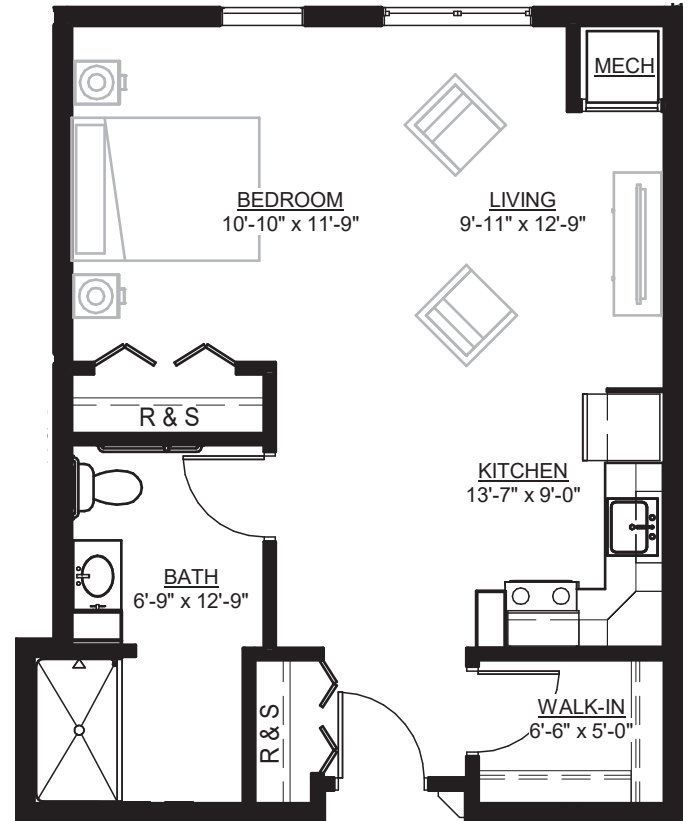


*The Elkhorn*  
**STUDIO**

- 613 square feet
- One unit available
- Second floor
- Assisted-living services available for an additional fee



Actual dimensions of apartments may vary.



*The Andrew*  
**STUDIO**

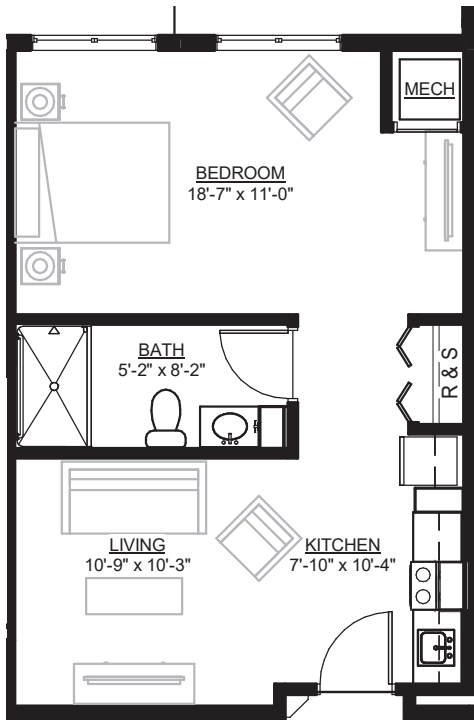
- 603 square feet
- One unit available
- Second floor
- Assisted-living services available for an additional fee

*Custom Finish  
Options Available!*

# SENIOR LIVING

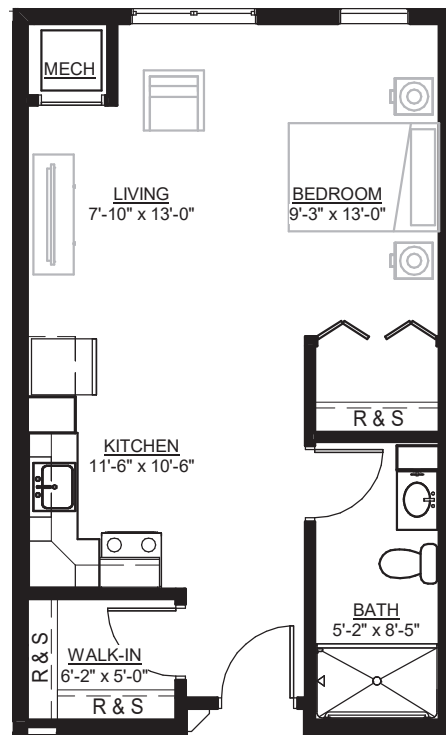
Independent & Assisted Living - STUDIO

**Bethesda**  
North Pointe



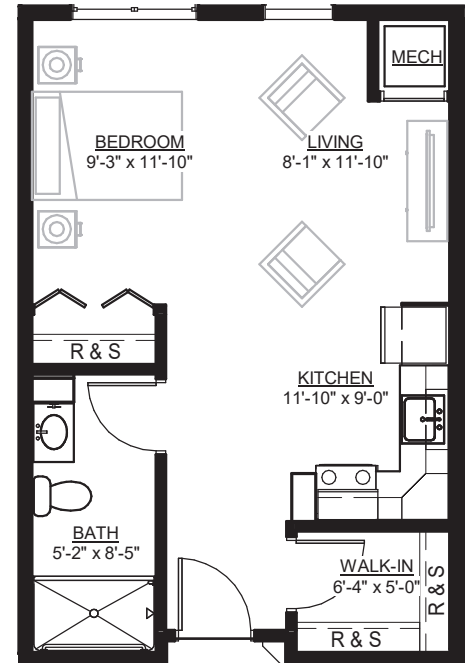
*The Alvig*  
**STUDIO**

- 533 square feet
- One unit available
- Second floor
- Assisted-living services available for an additional fee



*The Swan*  
**STUDIO**

- 523 square feet
- One unit available
- Second floor
- Assisted-living services available for an additional fee



*The Nest*  
**STUDIO**

- 485 square feet
- Two units available
- First and second floor
- Assisted-living services available for an additional fee

*Custom Finish  
Options Available!*

# BETHESDA NORTH POINTE

Enhanced Assisted Living

The Oak Woods Neighborhood

## The Oak Woods Neighborhood: Enhanced Assisted Living *18 apartments available*

Bethesda North Pointe's Oak Woods Neighborhood model of care will bring together assisted-living services that seniors require, the social atmosphere they desire, and the special quality of life they deserve. We want our residents to enjoy all the benefits of independent living — with the assurance that caring, experienced nursing assistance is readily available.

Assisted living is designed for adults who might need help with everyday tasks but do not require a skilled nursing facility. Our assisted-living units offer independence, security and services in an apartment-style atmosphere where nursing assistance is available. In addition, our model of enhanced assisted-living is designed to meet the needs of residents who require caregivers who are more readily available, yet are still able to remain in a home-like environment.

Monthly rent for The Oak Woods neighborhood includes the following enhanced assisted-living amenities:

- Complimentary basic cable package and access to guest wi-fi network
- Skilled staff available to assist with personal and health needs 24-hours per day
- Staffed recreational and social programs
- Coin-free laundry
- Private spaces for party reservations
- On-site building maintenance
- Secured entry system
- All utilities: heat, water, electricity, trash and recycling
- Emergency pendant response, by on-site trained staff, for assisted living
- Three meals and snacks served daily
- Daily housekeeping
- Select business office services
- Membership to Club Bethesda Wellness Center on campus



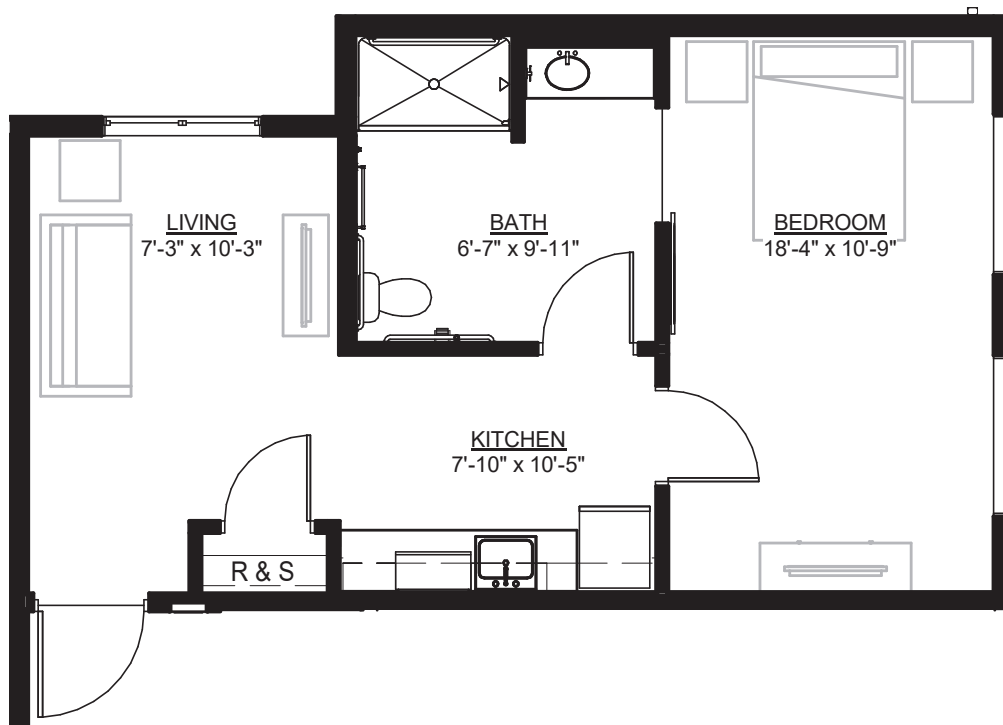
*It is illegal to discriminate against any person because of race, color, religion, sex, handicap, familial status or national origin.*



# ENHANCED ASSISTED LIVING

ONE BEDROOM

**Bethesda**  
North Pointe



## *The Monongalia* ONE BEDROOM

- 600 square feet
- Two units available
- Second floor
- Assisted-living services available for an additional fee

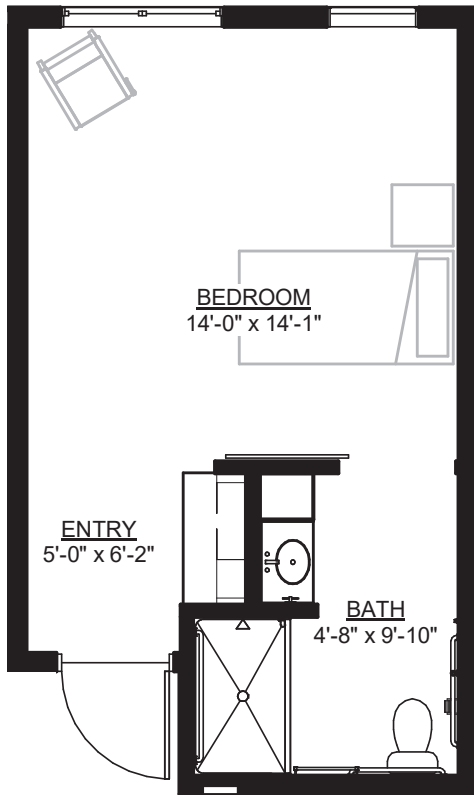


Actual dimensions of apartments may vary.

# ENHANCED ASSISTED LIVING

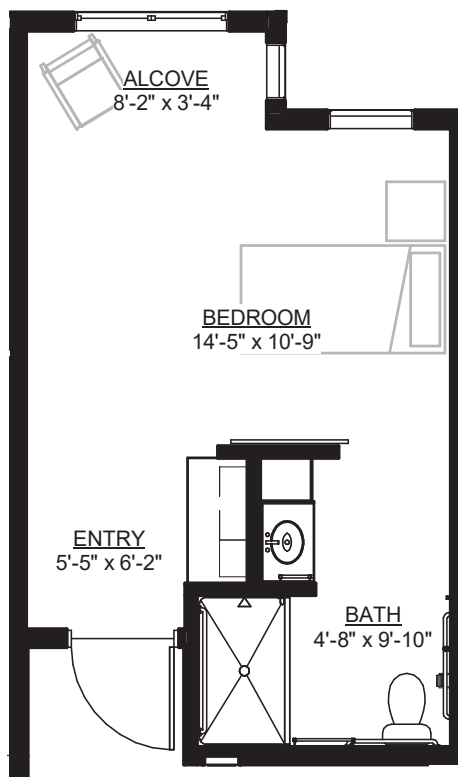
STUDIOS

**Bethesda**  
North Pointe



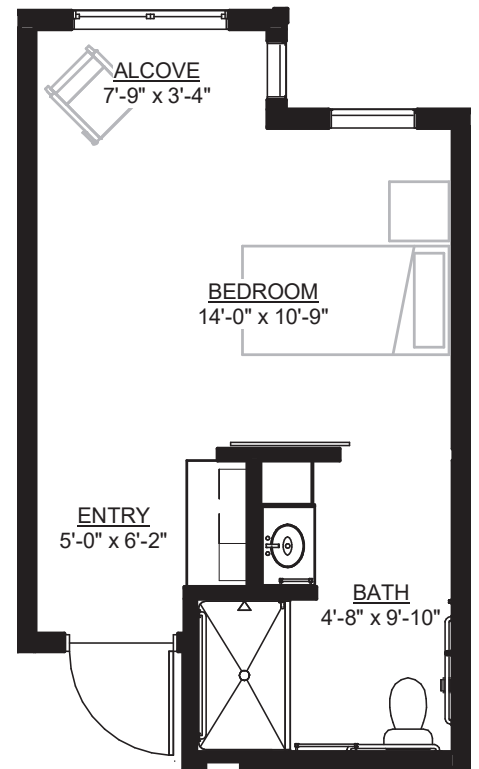
*The Gina*  
**STUDIO**

- 348 square feet
- Six units available
- Second floor
- Assisted-living services available for an additional fee



*The Jesse*  
**STUDIO**

- 336 square feet
- Three units available
- Second floor
- Assisted-living services available for an additional fee



*The George*  
**STUDIO**

- 328 square feet
- Seven units available
- Second floor
- Assisted-living services available for an additional fee

Actual dimensions of apartments may vary.



# BETHESDA NORTH POINTE

Memory Care Assisted Living

The Gardenia Neighborhood

## The Gardenia Neighborhood: Memory Care Assisted Living

*18 apartments available*

Bethesda North Pointe's Gardenia Neighborhood will provide assisted-living care in a secure setting that is designed to embody the comforts of home for individuals living with memory loss, while continuing to address person-centered health needs.

Our passion to embrace the value of family has driven a household design that enables couples the unique opportunity to remain living in a one-bedroom apartment within the neighborhood, if desired. Family connections are also nurtured through positive social experiences, personal relationships, and by offering support programs or access to education.

Monthly rent for The Gardenia Neighborhood's assisted-living apartments for people living with memory loss includes the following amenities:

- Complimentary basic cable package and access to guest wi-fi network
- Skilled staff available to assist with personal and health needs 24-hours per day
- Staffed recreational and social programs designed for those with memory loss
- Daily social gatherings
- Coin-free laundry
- Private spaces for party reservations
- On-site building maintenance
- Worry-free utilities: heat, water, electricity, trash and recycling
- Personal pendant for assistive and emergency response
- Secured entry system
- Fine dining – three meals and snacks served daily
- Daily housekeeping
- Selected business office services
- Membership to Club Bethesda Wellness Center on campus
- Access to three on-site dining locations



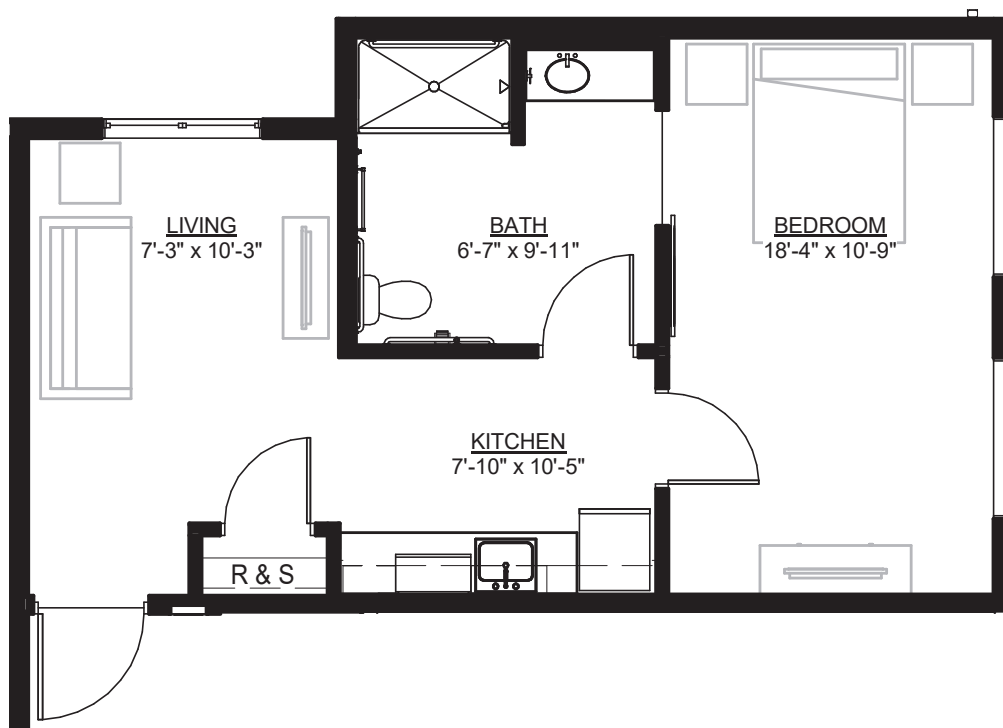
*It is illegal to discriminate against any person because of race, color, religion, sex, handicap, familial status or national origin.*



# MEMORY CARE ASSISTED LIVING

ONE BEDROOM

**Bethesda**  
North Pointe



## *The Mill Pond* ONE BEDROOM

- 600 square feet
- Two units available
- First floor
- Assisted-living services available for an additional fee

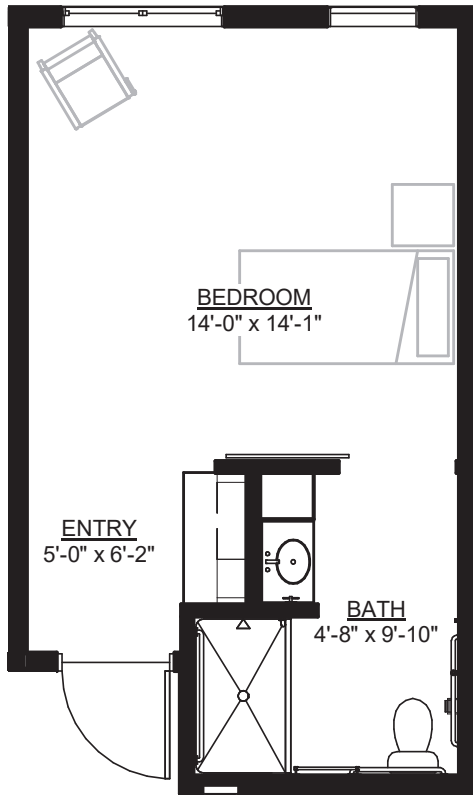


Actual dimensions of apartments may vary.

# MEMORY CARE ASSISTED LIVING

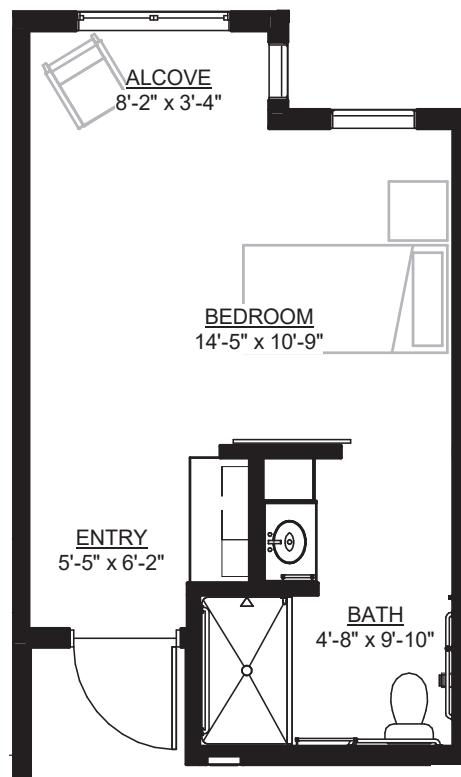
STUDIOS

**Bethesda**  
North Pointe



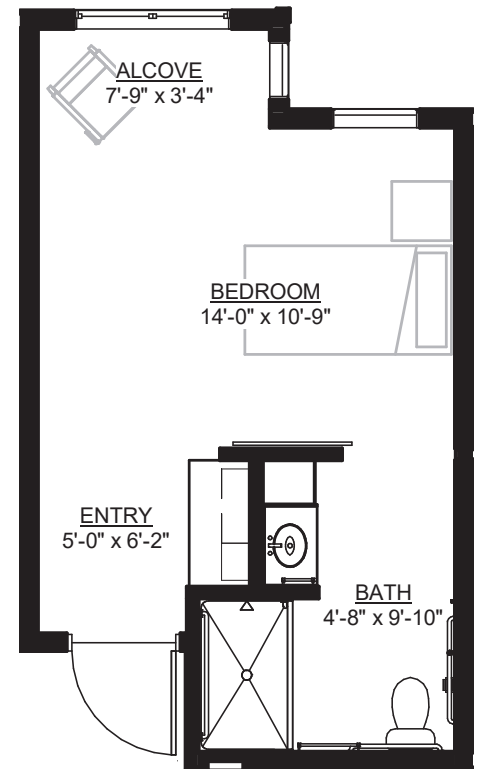
*The Otter*  
**STUDIO**

- 348 square feet
- Six units available
- First floor
- Assisted-living services available for an additional fee



*The Deer*  
**STUDIO**

- 336 square feet
- Three units available
- First floor
- Assisted-living services available for an additional fee



*The Crow*  
**STUDIO**

- 328 square feet
- Seven units available
- First floor
- Assisted-living services available for an additional fee

# BETHESDA NORTH POINTE

A legacy in the making.

## OUR LEGACY

Bethesda has a rich history of caring for others and serving the community of West Central Minnesota. Bethesda was founded in 1897 as an orphanage in Lamberton, Minnesota. In 1905, it relocated to a site six miles north of Willmar, at what was called the Country Home. Bethesda began providing services to older adults, as well as children, in 1910. The need for aging services grew, and by 1939, Bethesda began serving exclusively older adults.

Bethesda has since grown to achieve unparalleled success and become a national model for elder care and senior living services. We have accomplished this by defining the quality of life as not only medical, but also emotional, spiritual and social well-being, for those we are privileged to serve. Bethesda has always been at the leading edge, setting the bar and re-imagining the future.

Bethesda helps ensure seniors have the care they need in the location that is best for them. As the needs of seniors and our community have changed over the years, we have responded by introducing community programs with Bethesda as the umbrella of our services. Now, we embark on our next and perhaps greatest challenge ever: To transform the way residential long-term care and community services are delivered and to alter the concept of "nursing home" forever in the New London and Spicer area.

## OUR MISSION

Our mission statement is representative of what we do every day: Serving others together in faith, community and life. These gentle, inspiring words help guide us as we make decisions that best serve our Bethesda family.

