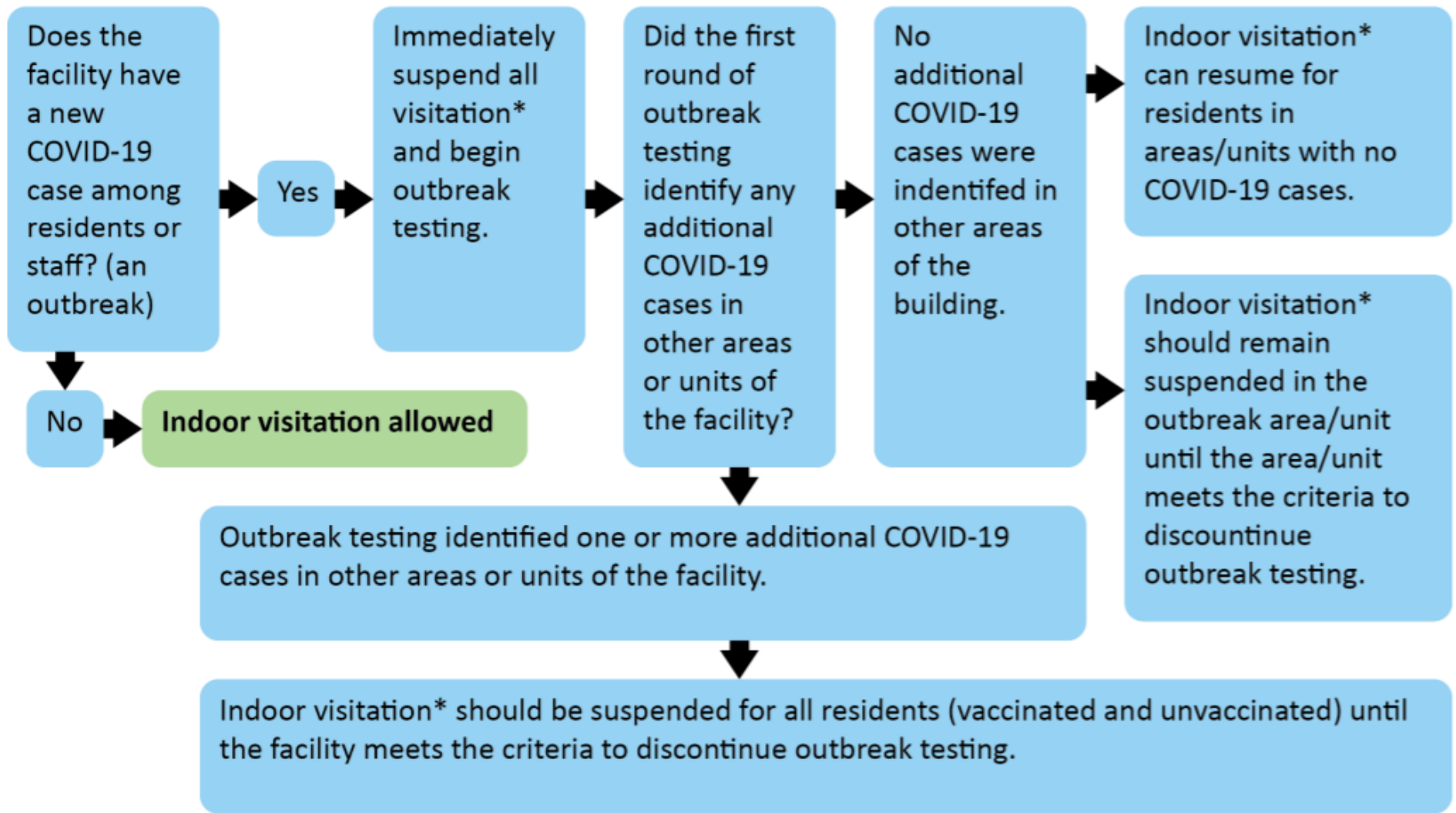


MDH Long-term Care Visitation Guidance Flowchart for Outbreak Status

MDH Considers one positive staff or resident case an "outbreak status".



*Note: compassionate care visits, essential caregivers, and visits required under state and federal disability rights laws, should be allowed at all times, regardless of a resident's vaccination status, the county's COVID-19 positivity rate, or an outbreak.